



Stream Stewardship Trust Fund

Old and New Programs

**Annual Report
January 1 through December 31, 2017**

**Dedicated to
Improving Missouri Stream Conservation**

TABLE OF CONTENTS

| | |
|--|----|
| Executive Summary | 3 |
| Missouri Conservation Heritage Foundation’s Stream Stewardship Trust Fund | 4 |
| U.S. Army Corps of Engineers District Map | 5 |
| MDC Unit Map | 6 |
| MDC Regions Map | 7 |
| SSTF Service Area Map | 8 |
| 2017 Old Program Accomplishments | 9 |
| Fees Collected and Impacted Resources | |
| Table 1. Overview of old program fee collection and allocation timeline | |
| 2017 New Program Accomplishments | 10 |
| SSTF Program Receipts | |
| Table 2. Fees and credits from development projects by Corps District | |
| Table 3. Fees and credits from development projects by EDU | |
| SSTF Mitigation Projects | 11 |
| Table 4. Allocations and credits from mitigation projects by Corps District | |
| Table 5. Allocations and credits from mitigation projects by EDU | |
| SSTF Program Receipts History | 12 |
| Table 6. Fees collected and impacted resources since inception by Corps District | |
| Table 7. Fees collected and impacted resources since inception by EDU | |
| SSTF Allocation Timeline | 13 |
| Table 8. Overview of SSTF fee collection and allocation timeline | |
| SSTF Credit Balances | |
| Table 9. Annual credit balance status by EDU | 14 |
| Mitigation Project Performance Tracking | |
| Table 10. 2017 Mitigation project monitoring | 15 |
| SSTF Financial Reporting | 16 |
| SSTF Income and Disbursements | |
| Table 11. 2017 SSTF income and disbursements by EDU | |
| 2017 SSTF Financial Instruments | |
| Appendix A—Status of SSTF Old Program Receipts as of December 31, 2017 | 17 |
| Appendix B—Status of Approved Old Program Mitigation Projects as of December 31, 2017 .. | 36 |
| Appendix C—Status of SSTF New Program Receipts as of December 31, 2017 | 55 |
| Appendix D—Status of SSTF New Program Mitigation Projects as of December 31, 2017 | 59 |
| Appendix E—SSTF Investment Instruments | 63 |
| Appendix F—How the Stream Stewardship Trust Fund Works | 29 |

EXECUTIVE SUMMARY

The purpose of this annual report is to inform Corps Districts of all activities related to the Missouri Conservation Heritage Foundation's (MCHF) Stream Stewardship Trust Fund (SSTF) undertaken under the old and new programs during January 1 through December 31, 2017. The old SSTF program began in 2000 under an MOU with the Corps of Engineers; the new SSTF program was established under the new 2008 regulations governing in-lieu fee mitigation programs and began after Corps of Engineers approval of the Instrument on June 6, 2013.

Old Program

Work continued on 2 projects (82, 85) and of these, 1 was completed (85). In addition, \$2,085.00 was spent on maintenance at one project (79) using old program funds. With Corps approval, \$11,912.96 in new program assurances funds were also spent on maintenance at 1 project (60). Total project expenditures for these projects during 2017 amounted to \$126,150.50 in old program funds and \$11,912.96 in new program funds. As of December 31, 2017, 2 projects (*78[easement pendind]*, *82[livestock watering system delayed due to landowner illness]*) are still underway and will be completed as quickly as possible.

New Program

By action of the Board of Directors of the MCHF, responsibilities for compensatory mitigation associated with four separate Clean Water Act Section 404 authorizations were assumed by the Trust Fund. Total mitigation credits assumed in 2017 were 16,843.5 credits. Total fees collected for these four projects during the same time frame were \$421,086.50.

During 2017, one project was approved by the MCHF Board and was submitted to the Corps and the IRT for approval. The Board allocated \$258,464.65 to a project in the Osage River EDU totaling 27,650.6 mitigation credits. This project (1011) was approved by the Corps or the IRT on October 18, 2017. One other project (1010) proposed in 2016 also received Corps and IRT approval in 2017. A total of \$837,052.69 was spent on ten mitigation projects (all but 1007, a preservation project completed in 2016), Five other projects (1003, 1004, 1006, 1008, and 1011) were completed in 2017.

A total of 37,003.6 credits were released from new mitigation projects in 2017; 4 projects (1005, 1009, 1010 and 1011) approved in the new program met project initial benchmarks (1011 also met an additional benchmark in 2017), and 3 other projects (1003, 1004, and 1008) met additional benchmarks triggering the release of partial credits. Two projects (1006 and 1007) met all benchmarks, triggering a full release of credits.

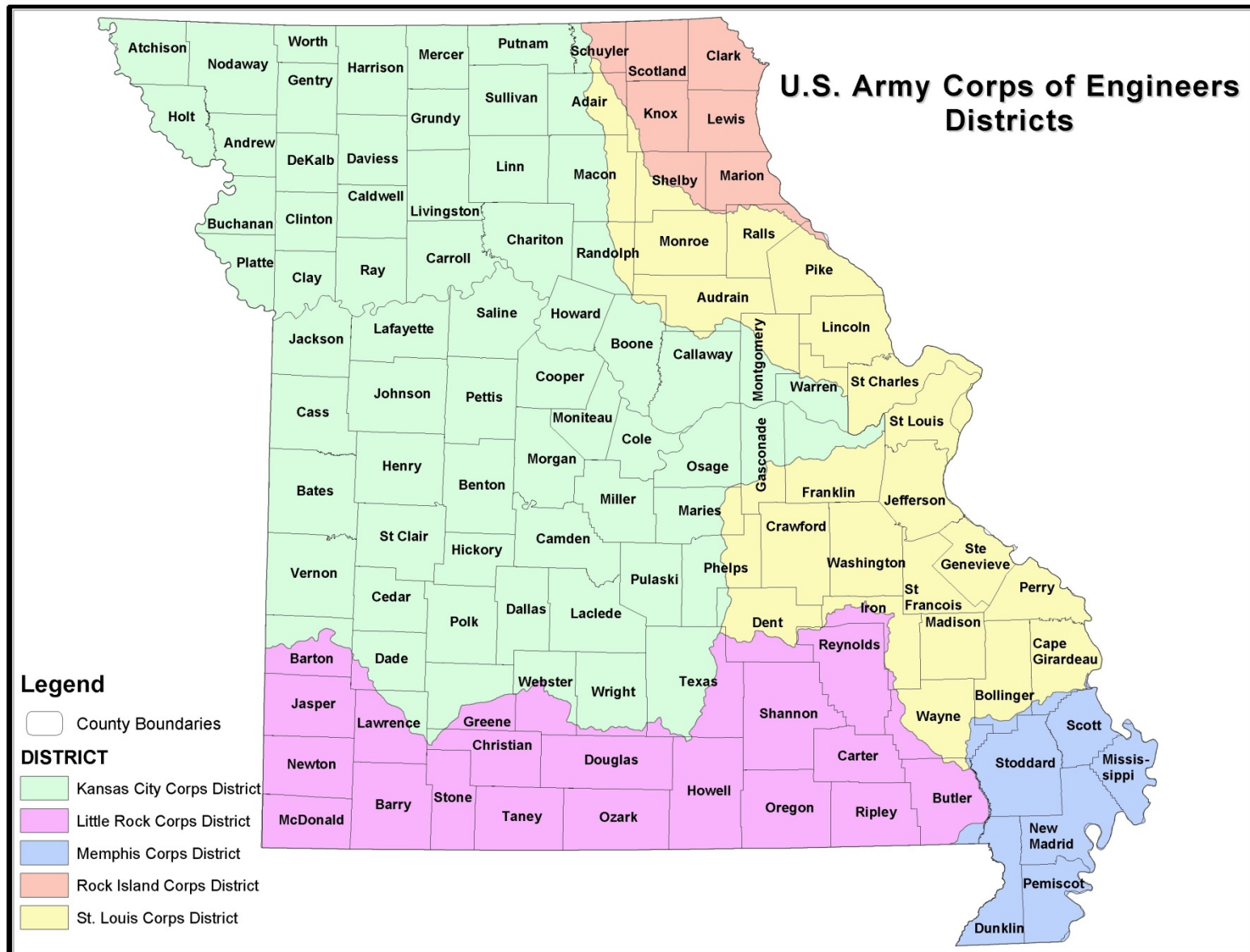
MISSOURI CONSERVATION HERITAGE FOUNDATION'S STREAM STEWARDSHIP TRUST FUND

A Memorandum of Understanding between the Missouri Conservation Heritage Foundation (MCHF) and the U.S. Army Corps of Engineers (COE) in 1999 authorized and established operating conditions for the Stream Stewardship Trust Fund (SSTF), named the old program in this annual report. With COE authorization, the MCHF—as the SSTF sponsor—can assume an applicant's Clean Water Act Section 404 stream mitigation responsibilities (as measured by acres impacted or mitigation credits). Costs associated with participating in the Trust Fund were based on specific permit requirements and market forces. In 2008, the Corps and EPA jointly issued new rules that changed the operation of compensatory mitigation programs in the United States, and on June 6, 2013, an Instrument was approved that governed the operation of the MCHF's Stream Stewardship Trust Fund (named the new program in this annual report) under the new rules.

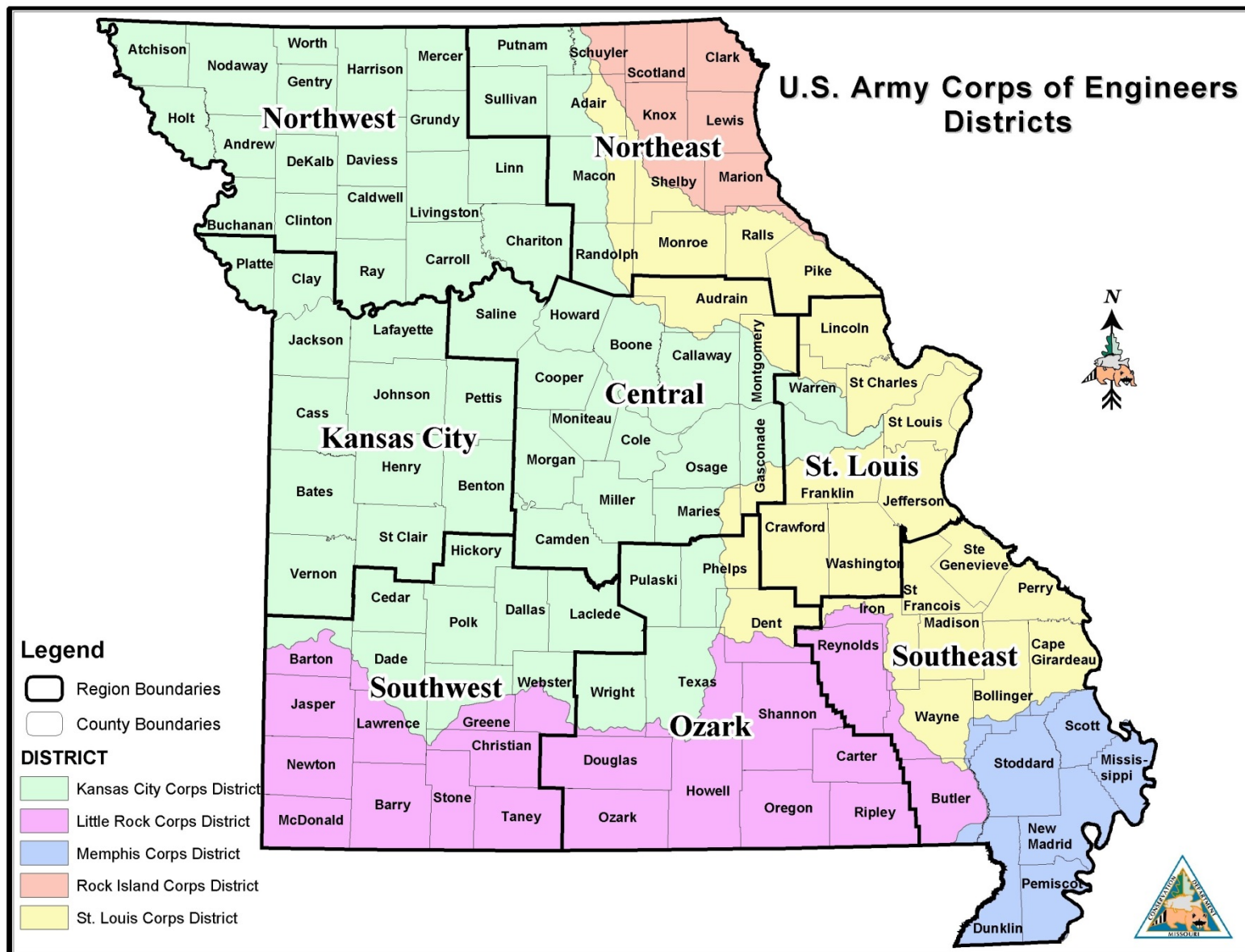
In general, a development project that impacts stream environmental values that cannot be mitigated on-site or in any other way, may pay into the Stream Stewardship Trust Fund (an amount based on the environmental impacts of the development project, as measured in mitigation credits) and have those values transferred to the MCHF. MCHF, in cooperation with the Missouri Department of Conservation (MDC) uses those funds to construct restoration, enhancement, and/or protection projects within the same watershed (Ecological Drainage Unit, or EDU) to generate additional mitigation credits that offset those involved in the development project.

Additional information regarding the SSTF before and after approval of the new instrument can be found in Appendix F.

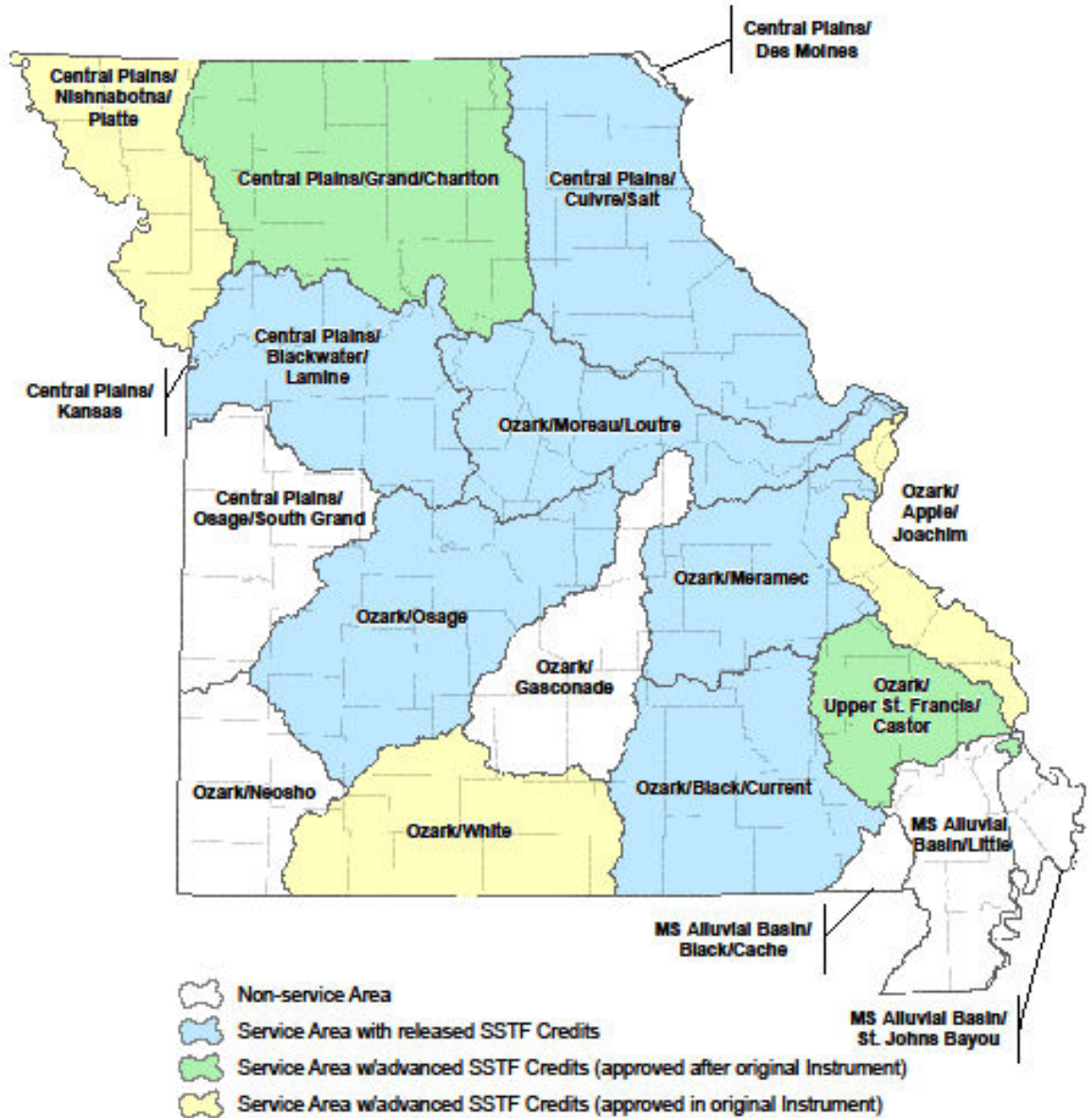
This annual report summarizes the fees collected from developing organizations during 2017, and the uses into which those fees have been put to improve the stream values of Missouri stream resources during the same period.







Stream Stewardship Trust Fund Selected Service Areas



2017 Old Program Accomplishments

Fees Collected and Impacted Resources

MCHF did not collect fees from projects governed by the 1999 MOU during 2017. However, during 2017, work continued on two mitigation projects (82, 85) and of these, one was completed (85). In addition, \$2,085.00 was spent on maintenance at one project (79) using old program funds. With Corps approval, \$11,912.96 in new program assurances funds was also spent on maintenance at one project (60). Total project expenditures for these projects during 2017 amounted to \$126,150.50 in old program funds and \$11,912.26 in new program funds. As of December 31, 2017, two projects (78, 82) are still underway and will be completed in future years. Appendix A lists the funds and mitigation credits that have been received by MCHF, and Appendix B tabulates the projects undertaken using those funds.

Under the agreement with the Corps, a minimum of \$5,903,866.00 and 78,981 credits should be allocated to mitigation projects through December 31, 2016. One belated project receipt accepted in 2016 under the old program results in \$36,655 and 7.89 jurisdictional acres allocated to mitigation projects by 2019, resulting in a total of \$5,940,521 to be allocated. As of December 31, 2017, \$6,154,556.41 and 420,820.1 credits have been allocated to mitigation projects.

Table 1. Overview of SSTF Old Program Fee Collection and Allocation Timeline

| Calendar Year | Total Fees | Total Credits | Allocation Timeline |
|---------------|--------------------|---------------|---------------------|
| 1999 | \$2,063 | | 2002 |
| 2000 | 228,881 | | 2003 |
| 2001 | 323,117 | | 2004 |
| 2002 | 205,472 | | 2005 |
| 2003 | 344,760 | | 2006 |
| 2004 | 658,141 | | 2007 |
| 2005 | 525,718 | | 2008 |
| 2006 | 561,217 | | 2009 |
| 2007 | 843,215 | 11,750 | 2010 |
| 2008 | 661,282 | 13,983 | 2011 |
| 2009 | 558,551 | 14,158 | 2012 |
| 2010 | 388,669 | 15,152 | 2013 |
| 2011 | 257,650 | 10,306 | 2014 |
| 2012 | 223,080 | 8,750 | 2015 |
| 2013 | 122,050 | 4,882 | 2016 |
| 2016 | 36,655 | * | 2019 |
| Total | \$5,940,521 | 78,981 | |

*Belated project receipt was accepted using jurisdictional acres

2017 New Program Accomplishments

SSTF Program Receipts

Upon referral by the Corps of Engineers and by action of the Board of Directors of the Missouri Conservation Heritage Foundation, responsibilities for compensatory mitigation associated with seven separate Clean Water Act Section 404 authorizations were assumed by the trust fund. All were assumed under the Missouri Mitigation Method that was implemented with the approval of the new Instrument for the SSTF on June 6, 2013. Total mitigation credits assumed in 2017 were 16,843.5 credits. Total fees collected under this method during the same time frame were \$421,086.50. See Appendix C for complete information about all SSTF new program receipts

Table 2. Fees and credits from development projects by Corps district

| Corps District | 2017 | |
|-----------------------|-----------------------|--------------------------|
| | Fees Collected | Credit Obligation |
| Kansas City | \$301,997.50 | 12,079.90 |
| Little Rock | 0 | 0 |
| Memphis | 0 | 0 |
| Rock Island | 0 | 0 |
| St. Louis | \$119,089.00 | 4,763.60 |
| TOTAL | \$421,086.50 | 16,843.50 |

Table 3. Fees and credits from development projects by EDU

| EDU | 2017 | |
|--------------------|-----------------------|--------------------------|
| | Fees Collected | Credit Obligation |
| Apple/Joachim | \$0 | 0 |
| Black/Current | \$0 | 0 |
| Blackwater/Lamine | \$276,675.00 | 11,067.00 |
| Cuivre/Salt | 0 | 0 |
| Grand Chariton | 0 | 0 |
| Meramec | \$21,400.00 | 856 |
| Moreau/Loutre | \$25,322.50 | 1,012.90 |
| Nishnabotna/Platte | \$0 | 0 |
| Osage | \$0 | 0 |
| St. Francis/Castor | \$97,689.00 | 3907.6 |
| White | \$0 | 0 |
| TOTAL | \$421,086.50 | 16843.5 |

SSTF Mitigation Projects

During 2017, one project (1011) was approved by the MCHF Board and was submitted to the Corps and the IRT for approval. This project allocated \$258,464.65 and 27,650.6 mitigation credits in the Ozark/Osage EDU. This project was approved on October 18, 2017. One project (1010), approved by the MCHF Board in 2016, received COE and IRT approval in 2017. See Appendix D for complete information about all new program mitigation projects.

Table 4. Allocations and credits from MCHF-approved mitigation projects by Corps district

| Corps District | 2017 | |
|----------------|---------------------|----------------------------|
| | Project Allocation | Mitigation Project Credits |
| Kansas City | \$258,464.65 | 27,650.60 |
| Little Rock | 0 | 0 |
| Memphis | 0 | 0 |
| Rock Island | 0 | 0 |
| St. Louis | \$0 | 0 |
| TOTAL | \$258,464.65 | 27,650.60 |

Table 5. Allocations and credits from MCHF-approved mitigation projects by EDU

| EDU | 2017 | |
|--------------------|---------------------|----------------------------|
| | Project Allocation | Mitigation Project Credits |
| Apple/Joachim | \$0 | 0 |
| Black/Current | 0 | 0 |
| Blackwater/Lamine | 0 | 0 |
| Cuivre/Salt | 0 | 0 |
| Meramec | 0 | 0 |
| Moreau/Loutre | 0 | 0 |
| Nishnabotna/Platte | 0 | 0 |
| Osage | \$258,464.65 | 27,650.60 |
| St. Francis/Castor | 0 | 0 |
| White | 0 | 0 |
| TOTAL | \$258,464.65 | 27,650.60 |

SSTF Program Receipt History

The following tables represent the total fees collected and credit obligation assumed since June 6, 2013, the beginning of the new program.

Table 6. Fees Collected and Impacted Resources since Inception by Corps District

| Corps District | Since Inception | |
|-----------------------|------------------------|--------------------------|
| | Fees Collected | Credit Obligation |
| Kansas City | \$815,520.00 | 32,620.80 |
| Little Rock | \$192,350.00 | 7,694.00 |
| Memphis | 0 | 0 |
| Rock Island | 0 | 0 |
| St. Louis | \$1,149,744.00 | 45,989.80 |
| TOTAL | \$2,157,614.00 | 86,304.60 |

Table 7. Fees Collected and Impacted Resources since Inception by EDU

| EDU | Since Inception | |
|--------------------|------------------------|--------------------------|
| | Fees Collected | Credit Obligation |
| Apple/Joachim | \$15,425.00 | 617 |
| Black/Current | \$39,925.00 | 1,597 |
| Blackwater/Lamine | \$474,225.00 | 18,969 |
| Cuivre/Salt | \$383,400.00 | 15,336 |
| Grand/Chariton | \$20,300.00 | 812 |
| Meramec | \$195,750.00 | 7,830 |
| Moreau/Loutre | \$633,675.00 | 25,347 |
| Nishnabotna/Platte | \$108,050.00 | 4,322 |
| Osage | \$44,175.00 | 1,767 |
| St. Francis/Castor | \$134,439.00 | 5,377.60 |
| White | \$108,250.00 | 4,330 |
| TOTAL | \$2,157,614.00 | 86,304.60 |

SSTF Allocation Timeline

The in lieu fee instrument under which the SSTF operates requires that credits sold from EDUs using advanced credits be allocated to mitigation projects in those EDUs within a three year period. Five EDUs use advance credits; Table 8 summarizes the timeline for allocating projects in those EDUs.

The mitigation responsibility from two development projects in the EDUs using advance credits were assumed in 2014: 1,470 credits in the Upper St. Francis/Castor EDU and 52 credits in the Apple Joachim EDU. By the 2017 allocation year, two projects have been allocated in the St. Francis/Castor EDU totaling 17,125 credits; to date, a good project in the Apple Joachim EDU has yet to be identified.

Table 8. Overview of SSTF Fee Collection and Allocation Timeline

| Calendar Year | Total Fees Collected | Total Credits | Allocation Year |
|----------------------|-----------------------------|----------------------|------------------------|
| 2013 | \$0 | 0 | 2016 |
| 2014 | \$38,050.00 | 1522 | 2017 |
| 2015 | \$142,350.00 | 5,694.00 | 2018 |
| 2016 | \$108,375.00 | 4,335.00 | 2019 |
| 2017 | \$97,689.00 | 3,907.56 | 2020 |
| TOTAL | \$386,464.00 | 15,458.56 | |

SSTF Credit Balances

The mitigation obligation of four development projects was assumed in 2017; eleven mitigation projects have been approved since 2013. Table 9 accounts for the credits assumed to date. The Instrument specifies releases in credits as projects are improved, installed, and meet project benchmarks. A total of 37,003.6 credits were released from new mitigation projects in 2017; 4 projects (1005, 1009, 1010, and 1011) obtained COE approval, which is the first benchmark in the Instrument for releasing credits. One project (1011) was an acquisition project and had many of its credits released when the land was purchased in fee title and held by MDC. Because the tract is part of a new MDC Conservation Area, the remaining credits will be released upon completion of an area management plan. Three other projects (1003, 1004, and 1008) met additional benchmarks triggering the release of partial credits. Two projects (1006 and 1007) met all benchmarks, triggering a full release of credits.

Table 9. Annual Credit* Balance Status

| EDU | 2016Credit Balance* ¹ | 2017 New Credits Assumed | Total Credits Assumed | Total 2017 Mitigation Project Credits** | 2017 Approved Released Credits | Total Approved Released Credits To Date | Credits Yet To Be Released | Advance Credits Offset | New Credits | End of 2017 Credit Balance |
|--------------------|----------------------------------|--------------------------|-----------------------|---|--------------------------------|---|----------------------------|------------------------|-------------|----------------------------|
| Apple/Joachim | 4,383.0 | - | 617.0 | - | - | | - | 0 | 0 | 4,383 |
| Black/Current | 26,929.0 | - | 1,597.0 | - | - | | - | 0 | 0 | 26,929 |
| Blackwater/Lamine | 31,004.0 | 11,067.0 | 18,969.0 | - | 1,225.8 | 1,225.8 | 4,953.2 | 0 | 1225.8 | 21,162.80 |
| Cuivre/Salt | - | - | 15,336.0 | - | - | | - | 0 | 0 | - |
| Grand/Chariton | 9,188.0 | - | 812.0 | - | - | | - | 0 | 0 | 9,188 |
| Meramec | 18,060.0 | 856.0 | 7,830.0 | - | - | | - | 0 | 0 | 17,204 |
| Moreau/Loutre | 2,224.5 | 1,012.9 | 25,347.0 | - | 4,846.4 | 6,058.0 | - | 0 | 6058 | 6,058.00 |
| Nishnabotna/Platte | 678.0 | - | 4,322.0 | - | - | | - | 0 | 0 | 678.0 |
| Osage | 146,984.7 | - | 1,767.0 | 27,650.6 | 25,536.4 | 33,370.1 | 33,448.9 | 0 | 33,370.1 | 172,521.1 |
| St. Francis/Castor | 10,350.0 | 3,907.6 | 5,377.6 | - | 1,716.0 | 3,536.0 | 14,144.0 | 3,536 | 0 | 8,158.40 |
| White | 1,442.2 | - | 4,330.0 | - | 3,679.0 | 4,451.2 | 13,943.8 | 4451.2 | 0 | 5,121.20 |
| TOTAL | | 16,843.5 | 86,304.6 | 27,650.6 | 37,003.6 | 48,641.1 | 66,492.9 | | | |

¹ 2016 credit balance adjusted based on updated review of receipt and mitigation project credits

*Includes initial released and advanced credits

**MCHF-approved projects; may or may not have COE/IRT approval at the time of this report

***Prior year balance minus new credits assumed plus released credits for the year

Mitigation Project Performance Tracking

Monitoring is required of all compensatory mitigation projects to determine if the project is meeting its performance standards and if additional measures are necessary to ensure that the compensatory mitigation project is accomplishing its objectives. Frequency of monitoring is normally detailed in a project's mitigation plan, is reportable annually in the annual report, and includes compliance reporting as well as whether the project is meeting performance objectives.

Eleven mitigation projects have been approved by the Corps under the new Instrument and are in varying stages of completion. Monitoring was completed throughout the year upon completion of project construction and at each milestone. Monitoring reports with photos were provided to the Corps with a request for credit release. Table 10 summarizes project monitoring for 2017.

Table 10. 2017 Mitigation Project Monitoring

| | | | Project Benchmarks Met | | | | | | | |
|---------------------------------|-----------------|---------------------|------------------------|----------------------------------|--------------|--------------|------------------|-----------------------------|--------------------------------|---|
| Project Number/Type | Project Credits | 2017 Monitor Dates* | Project Approval | Project Construction/Acquisition | Bench-mark 1 | Bench-mark 2 | Final Bench-mark | Meeting Project Objectives? | Total Released Credits to Date | Comments |
| 0093/Bridge replacement | 2167.8 | | X | X | X | | X | Y | 2167.8 | "Old" project, per 1/12/16 e-mail between Vitello and Berka |
| 1001/Stream stabilization | 9100.0 | 4/17, 8/17 | X | X | | | | Y | 1820 | Flood damage (winter 2015) repaired with modified design; working well to date |
| 1002/Stream stabilization | 7962.0 | 6/17 | X | | | | | N | 1592.4 | Flood damage (May 2017) caused significant damage; repairs scheduled early 2018 |
| 1003/Bridge replacement | 3861.0 | 9/17 | X | X | | | | Y | 1544.4 | |
| 1004/Bridge replacement | 11500.0 | 8/17 | X | X | | | | Y | 4600 | |
| 1005/Stream stabilization | 6179.0 | 12/17 | X | | | | | Y | 1225.8 | |
| 1006/Bridge replacement | 6058.0 | 6/17, 8/17 | X | X | X | | X | Y | 6058 | Project withstood two bankful floods in first year |
| 1007/Land purchase/preservation | 4508.0 | | X | X | | | X | Y | 4508 | Fee title transferred |
| 1008/Bridge replacement | 15198.4 | 10/17 | X | X | | | | Y | 6079.4 | |
| 1009/Stream stabilization | 8580.0 | 10/17 | X | X | | | | Y | 1716 | |
| 1010/Stream stabilization | 14534.0 | | X | | | | | Y | 2906.8 | |
| 1011/Land purchase/preservation | 27650.6 | | X | X | | | | Y | 16,590.3 | Fee title transferred; remaining 40% credit release will occur after area designated a CA |

SSTF Financial Reporting

SSTF Income and Disbursements

The final instrument requires an accounting of income and disbursements for the SSTF new program as a whole and by service area. During 2017, receipts from four projects provided a total of \$421,086.50. A total of \$837,052.69 was spent on ten mitigation projects (all except 1010, the acquisition of which was completed in 2016) during 2017.

Table 11. 2017 SSTF New Program Income and Disbursements by EDU

| EDU | Income | Disbursements |
|--------------------|---------------------|---------------------|
| Apple/Joachim | \$0 | \$0 |
| Black/Current | \$0 | \$0 |
| Blackwater/Lamine | \$276,675.00 | \$44,327.46 |
| Cuivre/Salt | \$0 | \$0 |
| Grand/Chariton | \$0 | \$0 |
| Meramec | \$21,400.00 | \$0 |
| Moreau/Loutre | \$25,322.50 | \$77,730.10 |
| Nishnabotna/Platte | \$0 | \$0 |
| Osage | \$0 | \$516,012.74 |
| St. Francis/Castor | \$97,689.00 | \$91,569.29 |
| White | \$0 | \$107,413.10 |
| TOTAL | \$421,086.50 | \$837,052.69 |

2017 SSTF Financial Instruments

The instruments in which Stream Stewardship Trust Fund monies are invested are limited to checking and money market accounts and certificates of deposits (CDs) for program funds and a money market account containing funds earmarked for long term financial assurances (Appendix E). All checking and money market accounts are held in FDIC-insured accounts at Hawthorne Bank, Jefferson City, MO. The balance for old program funds as of December 31, 2017 was \$179,061.10 in checking and money market accounts. Balances as of December 31, 2017, for new program funds were \$93,395.02 (checking and money market accounts for program funds), \$204,832.09 (money market account for long term financial assurances), and \$854,250.50 in CDs and accrued CD interest. Per the approved Instrument, new program funds will continue to be deposited into the long term financial assurances account until it reaches \$250,000; the account will then be maintained at or above that amount. In 2017, the Corps and MCHF Board approved using the new program long term financial assurances account to fund damages to both new and old program mitigation projects to insure the long term ecological and physical integrity of all projects.

Appendix A

Status of SSTF Old Program Receipts as of December 31, 2017

Appendix A - Status of SSTF Old Program Receipts as of December 31, 2017

| Corp Dist. | Region | County | Year | Date Received into SSTF | Juris. Acres | Mit. Crdts | Permit # | Fee Collected | Corps Applicant | Notes |
|-------------------|---------|----------|------|-------------------------|--------------|------------|------------|---------------------|---------------------------------------|---|
| | O - STL | Warren | 1999 | 10/06/99 | 0.100 | | 1998-01394 | \$2,063.25 | Lafarge Corporation | Jurisdictional first order stream, Owl Creek. |
| 1999 Total | | | | | 0.100 | | | \$2,063.25 | | |
| | M - NW | Ray | 2000 | 05/19/00 | 1.000 | | 1999-02288 | \$72,126.09 | Wal-Mart Corporation | 0.1 jurisdictional first order stream and 0.9 jurisdictional pond |
| | O - SE | Butler | 2000 | 08/25/00 | 2.480 | | 1999-15669 | \$69,750.11 | Brad Jolly | 1.8 acre Jurisdictional first and second order streams and 0.68 acre wetland (portions handled after the fact), HWY PP and Pike Creek. |
| | M - CE | Boone | 2000 | 09/13/00 | 0.050 | | 2000-00515 | \$4,613.43 | Boone County Public Works | 191 feet of stream impact. St. Charles Rd, N. Grindstone Creek. |
| | M - KC | Clay | 2000 | 09/26/00 | 0.010 | | 2000-01614 | \$3,336.22 | CEI Engineering Associates, Inc. | Jurisdictional first order stream |
| | M - CE | Cole | 2000 | 10/31/00 | 0.930 | | 1999-02170 | \$49,416.26 | Missouri Department of Transportation | 4,160 linear feet of stream impact on Rt 179 in cole County. |
| | M - KC | Clay | 2000 | 12/12/00 | 0.090 | | 2000-00697 | \$5,433.97 | Boschert Properties | After the fact authorization,first order urban stream, Antioch Hills mitigation |
| | M - CE | Cole | 2000 | 12/26/00 | 0.000 | | 1999-00657 | \$24,204.84 | City of Jefferson | Due to an unanticipated development, a previously approved (1996) mitigation site to establish 3.1 acres of trees and shrubs proved unavailable for the section 404 applicant. (3.1 acres not counted in total acres assumed) |
| 2000 Total | | | | | 4.560 | | | \$228,880.92 | | |
| | O - OZ | Phelps | 2001 | 05/23/01 | 0.110 | | 2000-09040 | \$14,180.84 | Missouri Department of Transportation | 0.11 acres of jurisdictional second order stream, Route 72, 300 feet of impact. |
| | M - KC | Jackson | 2001 | 06/18/01 | 0.110 | | 1999-01906 | \$23,213.73 | RED Development | 0.11 acres of jurisdictional first order stream, Summit Woods Crossing Development, 480 l.f. of impact. |
| | O - SE | Stoddard | 2001 | 06/26/01 | 1.290 | | 00-13-0060 | \$73,367.93 | Ralston Purina Company | 1.28 acres jurisdictional first and second order streams. 8,500 l.f. of impact near Avert, MO. |

Appendix A - Status of SSTF Old Program Receipts as of December 31, 2017

| Corp Dist. | Region | County | Year | Date Received into SSTF | Juris. Acres | Mit. Crdts | Permit # | Fee Collected | Corps Applicant | Notes |
|-------------------|---------|----------------------|------|-------------------------|--------------|------------|------------|---------------------|---------------------------------------|--|
| | M - CE | Montgomery & Audrain | 2001 | 08/07/01 | 1.800 | | 2001-01008 | \$66,755.00 | Panda Montgomery Power, L.P. | 1.8 acres of jurisdictional wetlands (several sites) |
| | O - SW | Polk | 2001 | 08/17/01 | 0.110 | | 2000-00892 | \$11,042.86 | Missouri Department of Transportation | 0.11 acres of jurisdictional first order stream, Route 13, 650 l.f of impact. |
| | O - STL | St. Charles | 2001 | 10/02/01 | 0.200 | | 2001-02770 | \$19,212.16 | Pace Properties | 0.2 acres of jurisdictional second order stream |
| | M - CE | Camden | 2001 | 10/04/01 | 0.270 | | 2001-01225 | \$23,158.65 | Missouri Department of Transportation | 0.27 acres of jurisdictional first order stream |
| | M - NE | Macon | 2001 | 10/29/01 | 2.520 | | 1996-02009 | \$67,679.98 | Missouri Department of Transportation | 2.52 acres jurisdictional streams |
| | O - STL | Lincoln | 2001 | 11/29/01 | 0.080 | | 2001-01871 | \$5,483.21 | Cannon Builders | 0.08 acres of jurisdictional first order streams, Legends Estates SubDivision, City of Troy. |
| | M - NW | Holt | 2001 | 11/30/01 | 0.270 | | 2001-01290 | \$19,022.72 | Missouri Department of Transportation | 0.27 acres jurisdictional first order stream impacts, Route 59 in Holt County. Mill Creek. |
| 2001 Total | | | | | 6.760 | | | \$323,117.08 | | |
| | M - NW | Buchanan | 2002 | 03/15/02 | 0.100 | | 2002-00508 | \$6,741.20 | Heartland Health Systems | 0.10 acres of jurisdictional stream |
| | O - STL | St. Charles | 2002 | 03/29/02 | 0.270 | | P-2305 | \$25,460.46 | Helmut Weber Construction Company | 0.27 acres of jurisdictional stream, 1,650 lf impact associated with Green Tree meadows dev. |
| | M - NW | Carroll | 2002 | 04/11/02 | 0.090 | | 2002-00501 | \$8,845.56 | Missouri Department of Transportation | 0.09 acres of jurisdictional stream, Route 24 impacts. |
| | O - STL | St. Charles | 2002 | 05/21/02 | 0.950 | | P-2292 | \$69,333.63 | Missouri Department of Transportation | 0.95 acres of jurisdictional stream, Adjacent to 40/61 between the MO River and I-70. |
| | M - KC | Pettis | 2002 | 06/10/02 | 0.050 | | 2001-00561 | \$6,382.94 | Shafer, Kline, and Warren | 0.05 acres of jurisdictional stream |
| | M - CE | Boone | 2002 | 08/15/02 | 0.010 | | 2002-01237 | \$2,879.12 | Southwinds Capital, LLC. | 0.01 acres of jurisdictional stream, Route AC, unnamed trip to Grindstone creek. |
| | M - KC | Clay | 2002 | 08/21/02 | 0.170 | | 2002-01562 | \$12,429.34 | Shafer, Kline, and Warren | 0.17 acres of jurisdictional stream, Cates Branch Tribs, storm water project. |

Appendix A - Status of SSTF Old Program Receipts as of December 31, 2017

| Corp Dist. | Region | County | Year | Date Received into SSTF | Juris. Acres | Mit. Crdts | Permit # | Fee Collected | Corps Applicant | Notes |
|-------------------|---------|-------------|------|-------------------------|--------------|------------|------------|---------------------|---------------------------------------|--|
| | M - CE | Miller | 2002 | 09/16/02 | 0.440 | | 2002-00524 | \$10,541.00 | Missouri Department of Transportation | 0.44 acres of jurisdictional stream, Route 54. |
| | M - NW | Carroll | 2002 | 10/23/02 | 0.280 | | 2002-01130 | \$10,660.24 | Missouri Department of Transportation | 0.28 acres of jurisdictional stream |
| | O - OZ | Wright | 2002 | 11/13/02 | 0.110 | | 2002-01841 | \$5,220.23 | Missouri Department of Transportation | 0.11 acres of jurisdictional stream, 200 lf impact on Route HH project. |
| | O - SW | Polk | 2002 | 11/20/02 | 0.580 | | 2002-00318 | \$34,991.23 | Missouri Department of Transportation | 0.58 acres of jurisdictional stream, Route 13 Polk County, 3,076 feet of impact. |
| | M - CE | Boone | 2002 | 12/19/02 | 0.290 | | 2002-01659 | \$9,626.23 | Boone County Public Works | 0.29 acres of jurisdictional stream, Goodin and Meredith Branch. |
| | M - KC | Platte | 2002 | 12/19/02 | 0.010 | | 2002-01930 | \$2,360.51 | D.R. SherryConstruction | 0.01 acres of jurisdictional stream, 100 lf impact to Prairie creek. |
| 2002 Total | | | | | 3.350 | | | \$205,471.69 | | |
| | O - STL | St. Louis | 2003 | 02/04/03 | 0.110 | | P-2328 | \$7,849.75 | Metropolitan Sewer District | 0.11 acres of jurisdictional stream, Metropolitan Sewer District |
| | O - OZ | Texas | 2003 | 02/28/03 | 0.060 | | 2002-1249 | \$5,243.75 | Missouri Department of Transportation | 0.06 acres of jurisdictional stream |
| | M - KC | Clay | 2003 | 03/13/03 | 0.040 | | 2002-02283 | \$3,139.51 | City of Liberty | 0.04 acres of jurisdictional stream |
| | O - STL | Jefferson | 2003 | 03/27/03 | 0.050 | | J6S1076 | \$3,951.23 | Missouri Department of Transportation | 0.05 acres of jurisdictional stream, Route B project impacts. |
| | O - STL | St. Louis | 2003 | 04/11/03 | 0.130 | | 2002-06210 | \$3,244.67 | Lutheran High School Association | Lutheran High School Association, unnamed trib off Lucas and Hunt Rd. |
| | O - STL | St. Charles | 2003 | 04/21/03 | 0.008 | | J6s0711 | \$2,942.86 | Missouri Department of Transportation | MoDOT, Route Z, St. Charles |
| | O - STL | Jefferson | 2003 | 04/22/03 | 6.560 | | P-2327 | \$197,330.00 | Missouri Department of Transportation | MoDOT. 3.28 ac stream impact at 2:1 ratio equals 6.56 acres |
| | M - NE | Putnam | 2003 | 05/05/03 | 0.360 | | 2003-00088 | \$33,692.73 | Missouri Department of Transportation | MoDOT, 0.36 acres of jurisdictional stream on Medicine Creek. |

Appendix A - Status of SSTF Old Program Receipts as of December 31, 2017

| Corp Dist. | Region | County | Year | Date Received into SSTF | Juris. Acres | Mit. Crdts | Permit # | Fee Collected | Corps Applicant | Notes |
|-------------------|---------|---------------------|------|-------------------------|--------------|------------|------------|---------------------|---------------------------------------|--|
| | M - CE | Cole | 2003 | 05/15/03 | 0.290 | | 2003-00299 | \$26,416.14 | Missouri Department of Transportation | MoDOT, HWY 179 in Cole Co. 0.29 acres of jurisdictional stream |
| | M - KC | Platte | 2003 | 05/28/03 | 0.290 | | 2003-00554 | \$8,523.87 | Shafer, Kline, and Warren | Shafer, Kline, and Warren. Tuiles Plaza, unnamed trib of Burlington creek |
| | M - KC | Clay | 2003 | 06/10/03 | 0.040 | | 2003-01172 | \$3,130.27 | Liberty Development, LLC | Liberty Development, LLC, unnamed trib to shoal creek. |
| | M - KC | Grundy | 2003 | 08/15/03 | 0.130 | | 2003-01133 | \$7,761.83 | Missouri Department of Transportation | Route U project. |
| | M - KC | Carroll & Lafayette | 2003 | 08/19/03 | 0.050 | | 1994-00758 | \$11,032.85 | Missouri Department of Transportation | MoDOT. Route 65 project, two unnamed trib of the Missouri River |
| | M - CE | Saline | 2003 | 10/02/03 | 0.020 | | 2003-01175 | \$4,202.13 | Missouri Department of Transportation | MoDOT. Saline County Route E highway project. |
| | O - STL | St. Charles | 2003 | 10/02/03 | 0.220 | | 2002-01670 | \$16,888.26 | Pace Properties | Pace Properties, Mexico Rd. and Hwy K road work; .11 ac stream impact at 2:1 ratio equals .22 acres |
| | M - NE | Monroe | 2003 | 12/09/03 | 0.020 | | 1994-03831 | \$3,125.21 | Missouri Department of Transportation | MoDOT, Route 151 highway work. |
| | M - CE | Boone | 2003 | 12/10/03 | 0.050 | | 2003-01414 | \$3,577.50 | Missouri Department of Transportation | MoDOT, two unnamed tributaries of Hinkson Creek, bridge work. |
| | M - KC | Pettis | 2003 | 12/22/03 | 0.010 | | 2002-01928 | \$2,707.50 | City of Sedalia | 150" impact to an unnamed trib to Shaver creek and .35 ac of forested wetland on Sedaia Airport property. |
| 2003 Total | | | | | 8.438 | | | \$344,760.06 | | |
| | O - STL | St. Louis | 2004 | 01/05/04 | 0.100 | | 2003-07140 | \$6,486.76 | Moellenhoff Building & Reality Co | Moellenhoff Building & Reality Co., Bittinger Rd, St. Louis Co. |
| | M - NE | Macon/Adair | 2004 | 01/08/04 | 0.650 | | P-2377 | \$29,800.76 | Missouri Department of Transportation | MoDOT Hwy 63 project, 0.65 acres of jurisdictional stream impact |
| | O - STL | Franklin | 2004 | 03/18/04 | 0.142 | | 2004-00086 | \$13,641.16 | Missouri Department of Transportation | MoDOT St. Johns Creek project in Franklin Co. |

Appendix A - Status of SSTF Old Program Receipts as of December 31, 2017

| Corp Dist. | Region | County | Year | Date Received into SSTF | Juris. Acres | Mit. Crdts | Permit # | Fee Collected | Corps Applicant | Notes |
|------------|---------|-------------|------|-------------------------|--------------|------------|-------------|---------------|---------------------------------------|--|
| | M - CE | Miller | 2004 | 04/08/04 | 0.059 | | 2003-2294 | \$3,980.58 | Missouri Department of Transportation | MoDOT, Riute 52 project |
| | M - NE | Randolph | 2004 | 04/20/04 | 0.480 | | 2003-09320 | \$38,389.38 | Missouri Department of Transportation | MoDOT Route 63 project. |
| | O - OZ | Phelps | 2004 | 04/20/04 | 1.150 | | 2003-02096 | \$62,988.73 | Missouri Department of Transportation | MoDOT, I-44 project between rt D and the Sugar Tree Rd, near Jerome, MO. |
| | M - KC | Andrew | 2004 | 04/30/04 | 0.090 | | 2004-00158 | \$7,017.30 | Missouri Department of Transportation | MoDOT Route K project. |
| | M - CE | Boone | 2004 | 05/05/04 | 0.160 | | 2004-00002 | \$5,830.89 | Boone County Public Works | Boone County Public Works, Ludwick Blvd |
| | M - CE | Callaway | 2004 | 05/07/04 | 0.100 | | 2004-00156 | \$13,093.82 | Missouri Department of Transportation | MoDOT, Route 94 project. |
| | O - STL | St. Charles | 2004 | 05/18/04 | 0.027 | | 2002-07750 | \$4,586.42 | City of Dardenne Prairie | City of Dardenne Prairie |
| | M - KC | Jackson | 2004 | 05/18/04 | 0.150 | | 2004-00365 | \$12,274.43 | Gale Communities, Lees Summit. | Gale Communities, Lees Summit. |
| | M - KC | Jackson | 2004 | 06/21/04 | 0.025 | | 2004-01216 | \$6,357.20 | George Butler & Assoc, Lenexa, KS. | George Butler & Assoc, Lenexa, KS. |
| | M - KC | Platte | 2004 | 07/08/04 | 0.900 | | 2004-001370 | \$4,970.94 | Platte County. MO | Platte County, North Congress Ave project. |
| | M - KC | Platte | 2004 | 07/19/04 | 0.200 | | 2004-00990 | \$6,084.75 | John F. Lutjen & Assoc. | John F. Lutjen & Assoc. Line Creek meadows. |
| | O - STL | St. Charles | 2004 | 08/02/04 | 0.080 | | 2004-00970 | \$9,118.65 | Fred Weber, Inc. | Fred Weber, Inc., O'Fallon Stormwater Project |
| | M - KC | Cass | 2004 | 08/06/04 | 0.090 | | 2004-01208 | \$13,777.62 | Martin Marietta Aggregate Co. | Martin Marietta Aggregate Co. |
| | O - STL | St. Charles | 2004 | 08/10/04 | 0.230 | | P-2369 | \$19,755.00 | St. Charles Co. HWY Dept. | St. Charles Co. HWY Dept. |
| | M - KC | Johnson | 2004 | 09/16/04 | 0.052 | | 2004-00342 | \$6,554.57 | Lowes Home Center | Lowes Home Center |
| | M - KC | Cass | 2004 | 09/22/04 | 1.480 | | 2003-02227 | \$140,048.81 | Cooper Land Development | Cooper Land Development, Creekmore project. |
| | M - KC | Jackson | 2004 | 09/22/04 | 0.095 | | 2004-01620 | \$6,418.69 | Kisner Construction | Kisner Construction, Alexander Place Project. |

Appendix A - Status of SSTF Old Program Receipts as of December 31, 2017

| Corp Dist. | Region | County | Year | Date Received into SSTF | Juris. Acres | Mit. Crdts | Permit # | Fee Collected | Corps Applicant | Notes |
|-------------------|---------|--------------|------|-------------------------|---------------|------------|------------|---------------------|---------------------------------------|---|
| | O - SE | St. Francois | 2004 | 11/01/04 | 4.360 | | 2004-02190 | \$23,912.00 | Missouri Department of Transportation | MoDOT Route 67, Fairgrounds Interchange Project |
| | M - NW | Daviess | 2004 | 11/01/04 | 0.040 | | 2004-02055 | \$3,379.00 | Missouri Department of Transportation | MoDOT Route B Project |
| | O - STL | St. Charles | 2004 | 11/05/04 | 0.030 | | 2004-03400 | \$4,165.00 | Nel-Co Development, Inc. | Sunset Hills Residential Subdivision |
| | M - KC | Clay | 2004 | 11/05/04 | 0.330 | | 2002-00707 | \$12,698.95 | Star Development Corporation | Meadows of Auburndale/Aburndale Estates |
| | M - KC | Cass | 2004 | 11/08/04 | 0.390 | | 2004-01555 | \$24,010.00 | Martin Marietta Aggregate Co. | Peculiar Quarry Channel Relocation |
| | M - CE | Camden | 2004 | 11/10/04 | 2.150 | | 2001-01225 | \$178,800.00 | Missouri Department of Transportation | MoDOT Route 5 Project |
| 2004 Total | | | | | 13.560 | | | \$658,141.41 | | |
| | M - NW | Buchanan | 2005 | 01/04/05 | 0.020 | | 2004-02371 | \$3,142.00 | Sprague Excavating Co., Inc. | Creek Woods Project, St. Joseph |
| | M - CE | Boone | 2005 | 01/24/05 | 0.030 | | 2004-02169 | \$4,115.00 | P&S Development Group, LLC | Agent - A Civil Group; Oakland Park Estates Project, North Oakland Gravel Road, unnamed tributary to Bear Creek |
| | O - OZ | Dent | 2005 | 02/09/05 | 1.090 | | 2003-08780 | \$66,751.00 | Missouri Department of Transportation | MoDOT Route 72 Project, J9P9362 |
| | M - KC | Platte | 2005 | 02/28/05 | 0.480 | | 2005-00312 | \$18,840.00 | City of Riverside | (TranSystems Corp.); Horizons Parkway Project on floodplain of Mo. River; .32 ac wetland at 1.5:1 ratio equals .48 acres |
| | M - KC | Cass | 2005 | 03/02/05 | 0.090 | | 2004-00098 | \$4,683.00 | Colony Homes, LLC | (Terra Technologies) Colony Homes Subdivision, .09 ac wetland along tributary of Camp Creek |
| | M - CE | Boone | 2005 | 03/24/05 | 0.030 | | 2005-01155 | \$4,607.00 | PGS Development LLC | (A Civil Group) Forest Ridge project, tributary of Cow Branch |
| | M - KC | Jackson | 2005 | 04/18/05 | 0.340 | | 2005-00077 | \$28,434.00 | Crackerneck Creek, LLC | (George Butler & Assoc.); Retail development and park in Adair Creek and tributaries |
| | M - KC | Jackson | 2005 | 05/02/05 | 0.010 | | 2004-00601 | \$2,780.00 | City of Kansas City, MO | (TranSystems Corp.); 87th Street - Blue River Road to I-435 |
| | M - CE | Boone | 2005 | 05/13/05 | 0.030 | | 2005-00697 | \$3,431.00 | Buttonwood Holdings LLC | The Pavilion project, tributary of Grindstone Creek |

Appendix A - Status of SSTF Old Program Receipts as of December 31, 2017

| Corp Dist. | Region | County | Year | Date Received into SSTF | Juris. Acres | Mit. Crdts | Permit # | Fee Collected | Corps Applicant | Notes |
|------------|---------|--------------|------|-------------------------|--------------|------------|--------------------|---------------|---------------------------------------|---|
| | O - STL | Franklin | 2005 | 05/19/05 | 0.080 | | 2005-00341 | \$4,671.00 | Missouri Department of Transportation | Tavern Creek Bridge Replacement project, Route T |
| | M - CE | Boone | 2005 | 06/08/05 | 0.030 | | 2004-01137 | \$6,274.00 | Advantage Construction, Inc. | Office building/parking lot construction affecting unnamed tributary of Hinkson Creek at future Green Meadows Rd., Columbia |
| | M - CE | Boone | 2005 | 06/23/05 | 0.050 | | 2005-01880 | \$4,030.00 | City of Columbia, MO | Oak Forest Project, two unnamed tributaries of Hinkson Creek (Permit previously auth to CMK, LLC as #2004-01138) |
| | O - STL | Lincoln | 2005 | 06/29/05 | 0.400 | | 2005-01180 | \$20,715.00 | Missouri Department of Transportation | Route 61 project; (20 acre stream impact at 2:1 ratio equals .40 acres) |
| | M - NE | Lewis, Clark | 2005 | 06/29/05 | 0.720 | | CEMVR-OD-P-2005-85 | \$67,895.00 | Missouri Department of Transportation | Route 61 project |
| | M - KC | Clay | 2005 | 06/29/05 | 0.200 | | 2004-00939 | \$8,676.00 | Intra-State Development Co. | (Weiskirch & Parks Engineers, Inc.) Woodbrooke Villas Third Plat (Estimate #1 - 0.2 acre wetland) |
| | M - KC | Clay | 2005 | 06/29/05 | 0.020 | | 2004-00939 | \$3,882.00 | Intra-State Development Co. | (Weiskirch & Parks Engineers, Inc.) Woodbrooke Villas Third Plat (Estimate #2 for 230' stream impact) |
| | O - STL | Jefferson | 2005 | 07/22/05 | 0.250 | | 2003-08482 | \$11,262.00 | Jefferson County Public Works Dept. | Lions Den Road Project, crossing at unnamed tributary to Rock Creek (.67 acre at 2:1 ratio equals 1.34 acres) |
| | M - CE | Boone | 2005 | 07/22/05 | 0.120 | | 2004-01140 | \$12,629.00 | Boone County Public Works Dept. | Soft Pit Hill Road Project, unnamed tributary to Slate Creek |
| | M - CE | Cole | 2005 | 08/04/05 | 0.090 | | 2004-01786 | \$11,387.00 | Jack and Jan Young | Private lake project, unnamed tributary(ies) to Moreau River |
| | M - KC | Jackson | 2005 | 08/29/05 | 0.100 | | 2005-01017 | \$5,854.00 | Dean Realty Co. | New facility for Dean Machinery Co., intermittent tributary to the Blue River |
| | O - STL | St. Charles | 2005 | 08/29/05 | 0.020 | | 2005-01130 | \$5,568.00 | 64K, LLC (Brinkmann Constructors) | O'Fallon Auto Mall project, unnamed tributary to Schote Creek (.34 ac stream impact @ 2:1 ratio = .68 ac) |

Appendix A - Status of SSTF Old Program Receipts as of December 31, 2017

| Corp Dist. | Region | County | Year | Date Received into SSTF | Juris. Acres | Mit. Crdts | Permit # | Fee Collected | Corps Applicant | Notes |
|------------|---------|--------------|------|-------------------------|--------------|------------|-------------|---------------|---------------------------------------|---|
| | M - KC | Lafayette | 2005 | 08/29/05 | 0.020 | | 2005-00427 | \$3,948.00 | Missouri Department of Transportation | I-70 S. Outer Rd. over Horseshoe Creek, Job #J410977 |
| | M - KC | Jackson | 2005 | 09/14/05 | 0.600 | | 2005-01372 | \$23,196.00 | Penske Truck Leasing | Two farmed wetlands totaling 0.6 acre to be filled at new leasing facility project site located on Missouri River bottom |
| | O - STL | St. Louis | 2005 | 09/15/05 | 0.110 | | 2003-02010 | \$11,297.00 | St. Louis Community College | New West County Ed Center project, two unnamed tributaries to Bonhomme Creek (2:1 ratio) |
| | M - NW | Caldwell | 2005 | 09/19/05 | 0.050 | | 2005-01299 | \$6,130.00 | Missouri Department of Transportation | Route D Bridge at West Sheep Creek |
| | M - KC | Platte | 2005 | 10/18/05 | 1.410 | | 2SBOXR13491 | \$52,599.00 | Riverside-Quindaro Bend Levee Dist. | (Affinis Corp.) 1.4 acres compensatory wetland mitigation |
| | M - CE | Cooper | 2005 | 10/26/05 | 0.010 | | 2005-00192 | \$3,047.00 | Wal-Mart Stores, Inc. | Boonville Supercenter construction project in two ponds previously constructed on Lilly Branch at Rt. B and Jackson Road |
| | O - SE | St. Francois | 2005 | 11/21/05 | 0.140 | | 2005-44959 | \$7,002.00 | Farmington R-7 School District | (Taylor Engineering) relocation/channelization of unnamed tributary to St. Francis River, 300' stream impact at 2:1 Ratio |
| | O - STL | St. Charles | 2005 | 11/21/05 | 0.520 | | 2005-45019 | \$45,730.00 | Missouri Department of Transportation | Boschert Creek, Job #J6U0759N |
| | O - OZ | Texas | 2005 | 11/23/05 | 0.020 | | 16057 | \$2,168.00 | Missouri Department of Transportation | Route 17, Jack's Fork River bridge project, Job #J9P0440 |
| | M - KC | Clay | 2005 | 11/29/05 | 0.480 | | 2005-00706 | \$19,203.00 | Briarcliff Development Co. | Briarcliff Medical Offices, .48 acres wetlands adjacent to intermittent tributary to Missouri River |
| | M - KC | Clay | 2005 | 11/29/05 | 0.010 | | 2005-00706 | \$2,823.00 | Briarcliff Development Co. | Briarcliff Medical Offices, intermittent stream/tributary to Missouri River |
| | M - KC | Jackson | 2005 | 11/29/05 | 0.600 | | 2005-01688 | \$23,196.00 | Ostler International, Inc. | (George Butler & Assoc.); KCMO Executive Park/Auto Parts Warehouse, .60 acres wetlands |

Appendix A - Status of SSTF Old Program Receipts as of December 31, 2017

| Corp Dist. | Region | County | Year | Date Received into SSTF | Juris. Acres | Mit. Crdts | Permit # | Fee Collected | Corps Applicant | Notes |
|-------------------|---------|-----------|------|-------------------------|--------------|------------|------------|---------------------|---------------------------------------|---|
| | O - STL | St. Louis | 2005 | 12/05/05 | 0.330 | | 2005-44941 | \$16,547.00 | Hazelwood Commerce Redevelopment | (Geotechnology, Inc.) MDNR cleanup site (landfill); unnamed trib, impacts (1,435' at 2:1 ratio equals 2,870' mitigation) |
| | M - CE | Cole | 2005 | 12/22/05 | 0.080 | | 2006-00143 | \$9,206.00 | Jerry J. Green Construction | Trails of Kauffman Hills Subdivision |
| 2005 Total | | | | | 8.580 | | | \$525,718.00 | | |
| | M - CE | Cole | 2006 | 01/12/06 | 0.110 | | 2005-02503 | \$4,634.00 | Riverbluff Condominiums LLC | Construction of permanent access road to project site across unnamed tributary to Missouri River |
| | M - KC | Clay | 2006 | 01/31/06 | 0.090 | | 2005-00727 | \$8,166.00 | Morrow Construction Co., Inc. | Carrington at North Platte Subdivision, Line Creek (410 lf intermittent tributary + 265 lf ephemeral tributary) |
| | M - KC | Jackson | 2006 | 02/10/06 | 0.140 | | 2006-00175 | \$6,498.00 | City of Blue Springs | (TranSystems Corp.) Route 7/Colbern Road project, .14 acre wetland |
| | M - CE | Boone | 2006 | 02/15/06 | 0.080 | | 2004-01076 | \$11,605.00 | Wynfield Development Corp. | (A Civil Group) residential subdivision project, two unnamed tributaries of Cow Branch |
| | M - KC | Clay | 2006 | 02/17/06 | 0.340 | | 2005-00238 | \$24,832.00 | Pulte Homes of Kansas City, Inc. | (Development of Kinsley Forest Estates Phase II) 1500' stream impact + .24 acre wetland adjacent to East Creek |
| | M - NW | Buchanan | 2006 | 02/22/06 | 0.300 | | 2006-00728 | \$15,430.00 | Missouri Department of Transportation | Route AC from Pickett Rd. south to Rt. 169, Job #J1S0834; 574' stream impact + .23 acre wetland |
| | O - SE | Butler | 2006 | 02/24/06 | 0.720 | | P-20074 | \$24,330.00 | Missouri Department of Transportation | Magill Hollow Creek/Black River project |
| | O - STL | St. Louis | 2006 | 03/09/06 | 0.380 | | P-2497 | \$18,190.00 | Metro, Cross County MetroLink | Shrewsbury Station parking lot: 447' of unnamed trib to River Des Peres + .08 acre of an emergent wetland |
| | O - STL | St. Louis | 2006 | 04/20/06 | 0.890 | | P-2516 | \$56,509.00 | St. Louis County Highways & Traffic | Two intermittent unnamed tributaries to Maline Creek; new roadway alignments/Hanley Road to Route N |

Appendix A - Status of SSTF Old Program Receipts as of December 31, 2017

| Corp Dist. | Region | County | Year | Date Received into SSTF | Juris. Acres | Mit. Crdts | Permit # | Fee Collected | Corps Applicant | Notes |
|------------|---------|-------------|------|-------------------------|--------------|------------|-----------|---------------|---------------------------------------|---|
| | O - STL | Warren | 2006 | 04/25/06 | 0.070 | | 200522081 | \$7,813.00 | Cotton Road Investment, LLC | Unnamed tributaries to McCoy Creek; development of residential subdivision in Foristell |
| | O - OZ | Carter | 2006 | 05/01/06 | 0.046 | | 20431 | \$3,085.00 | Current River Outfitters (Mike May) | 0.023 acre wetland @ 2:1 ratio = 0.046 acre wetland; wetland/tributaries to Current River |
| | O - STL | St. Louis | 2006 | 06/08/06 | 0.030 | | 2006-102 | \$6,808.00 | Mayer Manors, Inc. | 40-lot Bridgeton Meadows residential subdivision @ unnamed trib to Cowmire Creek, a primary tributary to Mo River |
| | O - STL | St. Charles | 2006 | 06/14/06 | 0.030 | | 200102790 | \$2,993.00 | The Jones Company, LLC | Villas at Sterling Point, non-compliance issue, unnamed tributary to Sandfort Creek |
| | M - NW | Ray | 2006 | 07/05/06 | 0.100 | | 200600456 | \$4,959.00 | Missouri Department of Transportation | Route A, Bridge T0389, Wakenda Creek |
| | M - KC | Clay | 2006 | 07/17/06 | 0.200 | | 200502435 | \$8,676.00 | Trophy Homes/Group 38, LLC | Barry Brooke Residential Development; 0.2 acres wetland |
| | M - KC | Clay | 2006 | 07/17/06 | 0.220 | | 200600444 | \$15,091.00 | Forestar Real Estate Group | Somerbrook Residential Dev.; 1,797' stream impact + 0.17 acre wetland (trib. of Fishing River + isolated pond) |
| | M - NE | Macon | 2006 | 07/18/06 | 0.180 | | 200545120 | \$13,445.00 | City of Macon | Stormwater improvements 700' from junction of Hwy. 63 and Bus. 36; unnamed tributary of South Fork Salt River |
| | M - KC | Jackson | 2006 | 07/25/06 | 0.080 | | 200600974 | \$9,126.00 | Tiffany Holdings, LLC | Glenwood Orchard Development, ephemeral tributary to RockCreek |
| | O - STL | Franklin | 2006 | 07/26/06 | 0.320 | | 200600122 | \$22,993.00 | AmerenUE | Labadie power plant impacts to Dunn Spring Creek, unnamed tribs of Dunn Spring Creek, & unnamed trib of Labadie Creek |
| | M - CE | Boone | 2006 | 07/27/06 | 0.170 | | 200600603 | \$9,651.00 | Mills Properties | Boulder Springs Condominiums, unnamed tributaries to Hinkson Creek |
| | M - KC | Clay | 2006 | 08/04/06 | 0.010 | | 200502222 | \$3,218.00 | Worlds of Fun | Construction of detention basin impacting 250' of ephemeral tributary |

Appendix A - Status of SSTF Old Program Receipts as of December 31, 2017

| Corp Dist. | Region | County | Year | Date Received into SSTF | Juris. Acres | Mit. Crdts | Permit # | Fee Collected | Corps Applicant | Notes |
|------------|---------|--------------|------|-------------------------|--------------|------------|---------------------|---------------|---------------------------------------|--|
| | O - STL | St. Louis | 2006 | 08/16/06 | 0.030 | | MVS-2006-449 | \$3,593.00 | Koch Development Company, Inc. | Residential subdiv. near Sappington; unnamed trib. flows→Gravois Creek→River Des Peres, a primary trib.→Mississippi Rvr. |
| | M - CE | Montgomery | 2006 | 08/21/06 | 0.070 | | 200600649 | \$7,075.00 | Ronald Landolt | Private lake project , unnamed tributary to Pinch Creek |
| | O - STL | St. Charles | 2006 | 08/28/06 | 0.010 | | MVS-2006-384 | \$1,884.00 | Hampton Grove LLC | Residential subdivision, unnamed ephemeral tributary to Spring Creek→Dry Branch→McCoy Creek→Cuivre River |
| | M - KC | Clay | 2006 | 09/01/06 | 0.040 | | 200601144 | \$5,466.00 | Star Development Corporation | Sara's Meadow residential subdivision, tributaries affecting East Fork, Shoal Creek |
| | M - CE | Cole | 2006 | 09/07/06 | 0.040 | | 200601016 | \$3,553.00 | City of Jefferson | Frog Hollow detention basin, impacting Frog Hollow Creek |
| | M - KC | St. Clair | 2006 | 09/11/06 | 0.710 | | 200500223 | \$36,285.00 | Missouri Department of Transportation | Route 13 intersection with Route 54, impacts to Coon Creek |
| | M - NE | Shelby, etc. | 2006 | 09/25/06 | 0.940 | | CEMVR-OD-P-2006-348 | \$94,376.00 | Missouri Department of Transportation | Route 36 from Shelby (Shelby County) to Rensselaer (Marion County) - various impacts (also Monroe & Ralls Counties) |
| | O - STL | Franklin | 2006 | 09/25/06 | 0.270 | | 200600096 | \$17,469.00 | M & T Development, Inc. | Summer Hill Estates Subdivision, impacts to Busch Creek |
| | M - NW | Daviess | 2006 | 10/02/06 | 0.010 | | 200600824 | \$2,709.00 | Missouri Department of Transportation | Route 6 project (impact to tributary of Big Muddy Creek) |
| | O - STL | St. Charles | 2006 | 10/13/06 | 0.020 | | MVS-2006-495 | \$8,880.00 | Foresight Development Group, Inc. | Kolkmeier Tract; unnamed tributaries of Dardenne Creek |
| | M - KC | Jackson | 2006 | 10/31/06 | 0.020 | | 200600139 | \$3,695.00 | Far Land Company LLC | Hidden Hills Commercial Development on Blue Branch Tributary To Sni-a-Bar Creek |
| | O - STL | St. Louis | 2006 | 11/07/06 | 0.090 | | MVS-2004-3230 | \$11,030.00 | Taylor Morley, Inc. | Bellefontaine Estates residential development at Watkins Creek and unnamed tributary to Watkins Creek |

Appendix A - Status of SSTF Old Program Receipts as of December 31, 2017

| Corp Dist. | Region | County | Year | Date Received into SSTF | Juris. Acres | Mit. Crdts | Permit # | Fee Collected | Corps Applicant | Notes |
|-------------------|---------|-------------|------|-------------------------|--------------|------------|---------------|---------------------|---------------------------------------|--|
| | O - STL | St. Charles | 2006 | 11/20/06 | 0.420 | | MVS-2006-700 | \$35,105.00 | THF Wentzville Three Development LLC | Wentzville Crossroads Marketplace North, unnamed tributaries at Dry Branch (2:1 Ratio) |
| | M - CE | Boone | 2006 | 12/01/06 | 0.110 | | 200602695 | \$8,991.00 | Americare Systems | Tiger Place Phase 2, tributary of Grindstone Creek |
| | M - KC | Clay | 2006 | 12/01/06 | 0.060 | | 200500514 | \$13,383.00 | Pulte Homes of Kansas City, Inc. | Kings Gate Subdivision, tributaries of Shoal Creek and East Fork Shoal Creek |
| | M - KC | Platte | 2006 | 12/04/06 | 0.320 | | 200300569 | \$13,790.00 | Weatherby Lake Improvement Company | Stormwater management facility, impacts to Rush Creek |
| | O - STL | Franklin | 2006 | 12/14/06 | 0.040 | | 200502060 | \$6,296.00 | M & T Development, Inc. | Lake Labadie subdivision impacting unnamed tributary to Missouri River |
| | O - STL | St. Charles | 2006 | 12/14/06 | 0.130 | | MVS-2006-813 | \$9,585.00 | Davis Street Land Company L.L.C. | The Meadows development, unnamed tributary to Lake St. Louis (Peruque Creek) |
| 2006 Total | | | | | 7.836 | | | \$561,217.00 | | |
| | M - KC | Clay | 2007 | 01/03/07 | 0.120 | | 200600969 | \$8,845.00 | BrownFig Development LLC | Manderley Housing Subdivision, unnamed tributary of Fishing River |
| | M - KC | Jackson | 2007 | 01/10/07 | 0.270 | | 2006-3268 | \$11,217.00 | City of Blue Springs | Phase 3 Peak Flow Lift Station; 0.27 acre wetland |
| | M - NE | Adair | 2007 | 01/17/07 | 0.090 | | 200601475 | \$14,303.00 | Missouri Department of Transportation | Route 63 project, tributaries of and also in East Fork Little Chariton River |
| | M - CE | Moniteau | 2007 | 01/31/07 | 1.680 | | 200600919 | \$126,403.00 | Missouri Department of Transportation | Route 50 project, multiple stream impacts |
| | M - KC | Jackson | 2007 | 02/09/07 | 0.590 | | 200602778 | \$21,271.00 | TranSystems Corp./BNSF Railway | Stream impacts = .15 acre + wetland impacts = .44 acre (wetland at 2:1 ratio) |
| | M - KC | Pettis | 2007 | 02/16/07 | 0.050 | | 200600636 | \$4,763.00 | Key Construction, Inc. | Box culvert at retail project at unnamed tributary of Brushy Creek |
| | O - STL | Jefferson | 2007 | 03/02/07 | 0.430 | | MVS-2006-1024 | \$9,621.00 | Collins Commons Development | North Slope residential subdivision, unnamed ephemeral tributary to Platin Creek, a primary tributary to Mississippi River |

Appendix A - Status of SSTF Old Program Receipts as of December 31, 2017

| Corp Dist. | Region | County | Year | Date Received into SSTF | Juris. Acres | Mit. Crdts | Permit # | Fee Collected | Corps Applicant | Notes |
|-------------------|---------|-----------|------|-------------------------|--------------|--------------|-----------------------|---------------------|--|--|
| | M - KC | Jackson | 2007 | 03/09/07 | 0.860 | | 200601046 | \$32,634.00 | 39th Street Transportation Dev. District | 0.43 acre wetland at 2:1 ratio |
| | M - KC | Platte | 2007 | 03/28/07 | 0.120 | | 200602710 | \$23,109.00 | Tiffany Square, Inc. | Tiffany Springs Development, unnamed tributaries to Second Creek |
| | M - KC | Jackson | 2007 | 04/13/07 | 0.020 | | 200301813 | \$3,491.00 | Investors Limited LLC | Belmont Farms, unnamed ephemeral tributary to Middle Fork Big Creek |
| | M - KC | Cass | 2007 | 04/13/07 | 0.330 | | 200601418 | \$14,064.00 | The Simmons Company | Harrisonville Market Place, Town Creek - 110' stream impact + 0.32 acre wetland |
| | M - KC | Jackson | 2007 | 06/08/07 | 0.026 | | 200602182 | \$2,360.00 | City of Independence | Jackson Drive extension; 0.26 acre wetland |
| | M - KC | Lafayette | 2007 | 06/27/07 | 0.150 | | NWK-2007-981 | \$6,861.00 | Union Pacific Railroad | Bridge 240.20 Replacement; 0.15 acre wetland |
| | M - KC | Clay | 2007 | 07/13/07 | 0.100 | | 200601980 | \$5,046.00 | Hunt Midwest | North Oak Village project; 0.10 acre wetland |
| | M - KC | Platte | 2007 | 08/06/07 | 0.080 | | 2007-0831 | \$4,320.00 | City of Riverside | Bridges over Line Creek project; 0.08 acre wetland |
| | O - OZ | Shannon | 2007 | 09/19/07 | 0.000 | 4362 | 200700028 | \$152,670.00 | Missouri Department of Transportation | Route 60 additional lanes |
| | M - CE | Cole | 2007 | 09/24/07 | 0.230 | | 200401626 | \$23,022.00 | Pickett Ray & Silver, Inc | Wal-Mart Stores Cole County Route 50/63 |
| | O - STL | St. Louis | 2007 | 10/01/07 | 0.918 | | P-25356 | \$48,688.00 | Metropolitan Sewer District | January-Thurston Storm Extension (2000040) |
| | M - KC | Clay | 2007 | 10/29/07 | 0.470 | | 206-3150 | \$35,538.00 | Dean Ledford Homes, LLC | Interurban Heights residential development |
| | M - CE | Boone | 2007 | 11/09/07 | 0.000 | 5787 | 2007-670 | \$202,545.00 | MO Department of Transportation/City of Columbia | Gans Creek, Highway 63 Interchange |
| | M - KC | Jackson | 2007 | 11/20/07 | 0.020 | 1601 | 2007-365 | \$58,177.00 | City of Independence | Phase 4 Little Blue Parkway between 39th and Mize Road .02 acre wetland |
| | O - STL | St. Louis | 2007 | 11/20/07 | 0.478 | | P-2329 | \$25,745.00 | Metropolitan Sewer District | Kirkwood road Commerce-Reardon Vertical concrete wall |
| | M - KC | Clay | 2007 | 12/15/07 | 0.040 | | 2007-0209 | \$8,522.00 | Steve Rogers - Rogers Plaza | Construction of Rogers Plaza Commercial Development |
| 2007 Total | | | | | 7.072 | 11750 | | \$843,215.00 | | |
| KC | M - NW | Buchanan | 2008 | 01/30/08 | 5.320 | | NWK-2007-275 modified | \$21,517.00 | JSC Development, LLC | Tuscany Villiage - under old method |

Appendix A - Status of SSTF Old Program Receipts as of December 31, 2017

| Corp Dist. | Region | County | Year | Date Received into SSTF | Juris. Acres | Mit. Crdts | Permit # | Fee Collected | Corps Applicant | Notes |
|------------|---------|--------------|------|-------------------------|--------------|------------|--------------------|---------------|--|---|
| KC | M - KC | Platte | 2008 | 02/06/08 | | 3744 | NWK-2007-1928 | \$137,538.00 | Briarcliff Development Co. | Roadway interchange Tullison and NW Briarcliff ; .14 acre wetland |
| STL | O - STL | Jefferson | 2008 | 02/21/08 | 0.014 | | MVS-2006-494 | \$3,481.00 | Jefferson County Public Works Dept. | Seckman Road Reconstruction |
| KC | M - CE | Boone | 2008 | 02/27/08 | 3.158 | | 2006-03126 | \$16,148.00 | CS. Properties, LLC | Ashland Crossing |
| STL | O - STL | St. Louis | 2008 | 03/14/08 | 1.154 | | 2000-03810 NW23 | \$15,803.00 | Missouri Department of Transportation | This relates to a project in their files from 2000, during an audit it was determined that the contractor had not performed sufficient mitigation. The COE required 2:1 mitigation as a correction. |
| STL | O - SE | St. Francois | 2008 | 03/28/08 | | 1600 | MVS-2007-552 | \$56,000.00 | Parkland Health Center | Expansion impacting willow creek |
| LR | O - SW | Greene | 2008 | 04/11/08 | 0.370 | | 2006-20576-1 NWP39 | \$2,914.00 | TKG-RKS Joint Venture | Commercial Dev. Rts. 60 and 160 |
| KC | M - CE | Boone | 2008 | 08/07/08 | | 1650 | 2007-01762 NWP39 | \$57,750.00 | Jeffrey E Smith Co - ENTRIX Consultant | Nifong Blvd Extension / Mill Creek |
| STL | O - STL | St. Louis | 2008 | 09/16/08 | | 1312 | MVS-2007-704 NWP39 | \$45,920.00 | Prairie Farms Dairy, Inc - Richard O'brien | Facilities Expansion impacting unnamed tributary of Coldwater Creek |
| KC | M - KC | Johnson | 2008 | 09/19/08 | 0.300 | | NWK-2007-2079 | \$12,306.00 | Johnson County Comm. - Harrington & Cortelyou, Inc | Replacement of Bridge #21800201 over Bear Creek & road alignment |
| KC | M - KC | Pettis | 2008 | 10/01/08 | 0.600 | | 2007-01099 NWP 39 | \$3,702.00 | Thompson Hills West Hwy 50 Develop. | Storm culvert placement with minor excavation & placement of rock backfill for 265 linear feet |
| KC | M - CE | Cole | 2008 | 10/16/08 | 6.660 | | 200601815 | \$84,099.00 | JC Area Chamber of Commerce | Discharge 52,100 cubic yds of on-site soil & concrete in US waters as part of Militia Drive Industrial Park infrastructure |
| KC | M - KC | Jackson | 2008 | 10/21/08 | | 2567 | NWK-2007-808 | \$89,845.00 | City of Lee's Summit / MODOT | I-470 & Strother Rd Project involving placing fill material in Little Blue River |
| KC | M - KC | Clay | 2008 | 11/18/08 | 0.110 | | 200502648 - NWP 29 | \$5,408.70 | BPI Midwest LLC | Construction of Northview Meadows residential development - placement of fill in East Fork of Shoal Creek |

Appendix A - Status of SSTF Old Program Receipts as of December 31, 2017

| Corp Dist. | Region | County | Year | Date Received into SSTF | Juris. Acres | Mit. Crdts | Permit # | Fee Collected | Corps Applicant | Notes |
|-------------------|--------|----------------------|------|-------------------------|---------------|-----------------|-----------------|---------------------|---|---|
| KC | M - KC | Lafayette | 2008 | 12/29/08 | | 3110 | NWK-1994-1524 | \$108,850.00 | MoDot | Realignment of 3.1 miles of Route 13 southeast of Lexington in Lafayette County |
| | | | | | | | | | | |
| 2008 Total | | | | | 17.686 | 13983 | | \$661,281.70 | | |
| KC | M - KC | Johnson | 2009 | 03/18/09 | 0.050 | | NWK-2009-0218 | \$3,230.70 | Southern Star Central Gas Pipeline, Inc. | Replacement of approximately 2-miles of pipeline |
| KC | M - KC | Multiple | 2009 | 04/27/09 | 4.890 | | NWK-2006-0957 & | \$178,922.70 | TransCanada Keystone Pipeline, L.P. | Crude oil pipeline from Buchanan to Randolph Counties |
| KC | M - NW | Buchanan | 2009 | 05/07/09 | 0.250 | | NWK-2008-2148 | \$10,490.70 | BlueScope / Varco-Pruden Co | Commercial Development - Plant Expansion |
| KC | M - NW | Buchanan | 2009 | 05/26/09 | | 2211 | NWK-2008-1239 | \$55,275.00 | St. Joseph School District | Construction of new elementary school |
| STL | O-STL | St. Louis | 2009 | 07/08/09 | | 2095 | P-2683 | \$52,375.00 | City of Maryland Heights | Re-development of office / warehouse - Millwell Green Development / new government center |
| LR | O-SE | Butler | 2009 | 07/31/09 | | 2296 | 2001-17280-2 | \$57,400.00 | Cripple Creek Transportation Development District | Shelby Road Project |
| LR | O-SW | Taney | 2009 | 08/07/09 | | 1365 | 2008-00322 | \$34,125.00 | Overland Property Group | Apartment complex - Bee Creek tributary |
| STL | O-SE | Madison/Wayne/Butler | 2009 | 08/24/09 | | 2380 | MVS-2006-655 | \$59,500.00 | MoDot | Route 67 Project |
| STL | O-STL | St. Louis | 2009 | 10/27/09 | | 3073.40 | P-2712 | \$76,835.00 | City of Frontenac | Construction of stormwater improvements |
| KC | M - KC | Jackson/Clay | 2009 | 11/13/09 | | 738.16 | 2007-289 | \$18,454.00 | MoDot | kclcon Project in Kansas City, MO |
| KC | M - NW | Buchanan | 2009 | 11/30/09 | 0.290 | | NWK-2009-1417 | \$11,942.70 | St. Joseph Regional Port Authority | Road construction / parking lot @ 4001 Stockyard Express |
| 2009 Total | | | | | 5.48 | 14158.56 | | \$558,550.80 | | |
| MEM | O - SE | Scott | 2010 | 02/17/10 | | 2825.00 | MVM-2009-383 | \$70,625.00 | MoDot | Construction of new outer road east of Interstate 55 in Scott City, MO |
| STL | O-STL | St. Louis | 2010 | 03/05/10 | | 299.00 | MVS-2008-651 | \$7,475.00 | Florissant Real Estate Investors | Garden Plaza Project - Construction of independent / assisted living community |

Appendix A - Status of SSTF Old Program Receipts as of December 31, 2017

| Corp Dist. | Region | County | Year | Date Received into SSTF | Juris. Acres | Mit. Crdts | Permit # | Fee Collected | Corps Applicant | Notes |
|-------------------|--------|-----------|------|-------------------------|--------------|-----------------|-----------------------|---------------------|---|--|
| KC | M - KC | Platte | 2010 | 04/23/10 | | 2262.00 | NWK-2010-376 | \$56,550.00 | MoDot | Widening of Route 45 near Parkville, MO |
| KC | O-STL | Franklin | 2010 | 06/03/10 | | 399.00 | NWK-2010-00770 | \$9,975.00 | Franklin County, Division of Public Works | Road repairs along Little Tavern Creek in St. Albans, MO |
| KC | | | 2010 | 06/03/10 | | 5040.00 | NWK-2009-00423 | \$126,000.00 | APAC - Missouri, Inc. | Individual Permits - Actual 404 permit & 401 water quality certification pending |
| STL | M-NE | Adair | 2010 | 06/18/10 | | 2126.00 | MVS-2009-97 | \$53,150.00 | Bob Rockhold | Rock Lake project - private lake within unnamed tributary to Bear Creek |
| STL | O-STL | St. Louis | 2010 | 08/09/10 | | 809.00 | MVS-2009-787 | \$20,225.00 | H.B. Realty Corp | Laurel Bluffs residential development |
| KC | M-NW | Daviess | 2010 | 09/23/10 | | 1392.00 | 2010-01441 | \$34,800.00 | MoDot | Relocate/realign portion of Sampson Creek at Route T bridge (NO262) |
| STL | O-STL | St. Louis | 2010 | 11/09/10 | 0.22 | | MVS-2006-13 | \$9,869.00 | City of Maryland Heights | Franke Shumate Stormwater Improvement Project |
| 2010 Total | | | | | 0.22 | 15152.00 | | \$388,669.00 | | |
| STL | O-STL | St. Louis | 2011 | 01/10/11 | | 875.00 | MVS-2009-243 | \$21,875.00 | Metropolitan St. Louis Sewer District | Brookings #10931 Channel Improvements |
| KC | M - KC | Cass | 2011 | 05/31/11 | | 873.00 | NWK-2008-292 | \$21,825.00 | Sioux Chief Manufacturing | Permit #NWK-2008-292 |
| KC | M - KC | Clay | 2011 | 08/11/11 | | 4666.00 | NWK-2011-966 | \$116,650.00 | MoDot | MoDot jobs #J4U1165 and J4U1166: placement of fill material within the tributaries of Shoal Creek |
| KC | M-NW | Buchanan | 2011 | 08/24/11 | | 507.00 | NWK-2011-850 | \$12,675.00 | Christie Development Associates, LLC | Cook Crossing, Belt Highway & Cook Rd; placement of fill into unnamed tributary to Roys Branch Creek |
| STL | O-STL | St. Louis | 2011 | 11/23/11 | | 3385.00 | MVS-2010-231 (P-2770) | \$84,625.00 | Metro | Discharge fill material into intermittent tributary which flows into the River des Peres for improvement of the rail alignment at the Metro UMSL South Station |
| 2011 Total | | | | | 0.00 | 10306.00 | | \$257,650.00 | | |

Appendix A - Status of SSTF Old Program Receipts as of December 31, 2017

| Corp Dist. | Region | County | Year | Date Received into SSTF | Juris. Acres | Mit. Crdts | Permit # | Fee Collected | Corps Applicant | Notes |
|---|--------|------------------|------|-------------------------|--------------|----------------|----------------|---------------------|---|---|
| LR | O-SE | Butler | 2012 | 02/15/12 | | 2603.00 | SWL-2010-00954 | \$65,075.00 | Health Management Associates/Poplar Bluff Regional Medical Center | Construction of a medical facility with offices, parking & additional infrastructure - Pike Creek & two other ponds |
| KC | M-CE | Boone | 2012 | 03/09/12 | | 351.00 | 2011-01224 | \$8,775.00 | G2 Enterprises of Columbia | Site improvements in tributary of Bear Creek, Perche Creek Boone County / Joe Machens Ford - Engineering Surveys & Services |
| STL | O-STL | St. Louis | 2012 | 04/25/12 | | 189.00 | MVS-2011-713 | \$4,725.00 | QuikTrip | QuickTrip No. 605 Travel Center |
| KC | M-CE | Moniteau | 2012 | 05/01/12 | | 299.00 | NWK-2011-0168 | \$7,475.00 | City of California | City of California North Owen Stree & West North Street / stormwater project |
| STL | O-STL | St. Louis | 2012 | 05/29/12 | | 1568.00 | P-2815 | \$39,200.00 | Laclede Gas Company | Shrewsbury Yard mitigation fees, Deer Creek |
| KC | M-CE | Boone | 2012 | 07/31/12 | | 774.40 | NWK-2012-00693 | \$19,360.00 | BJO Inc | Wingate South Development , Hinkson Creek, Boone County |
| STL | O-STL | St. Louis | 2012 | 09/13/12 | | 1168.00 | MVS-2012-299 | \$29,200.00 | QuikTrip | QuickTrip No. 615R Travel Center |
| KC | M-KC | Jackson | 2012 | 12/07/12 | 0.08 | | 2007-0273 | \$4,319.70 | Olsson Associates | City of Independence: North Jackson Drive extension between Mize Rd & Holke Rd |
| KC | M-KC | Pettis | 2012 | 12/27/12 | | 1798.00 | NWK-2010-00427 | \$44,950.00 | ProEnergy Services | Detention basin constructed in 2006 without Corps authorization; tributary of Brushy Creek |
| 2012 Total | | | | | 0.08 | 8750.40 | | \$223,079.70 | | |
| KC | M-KC | Cass | 2013 | 02/05/13 | | 1676.00 | NWK-2008-966 | \$41,900.00 | Terra Technologies/LL-J3 PANDI LLC Remitter: Swallow Tail LLC | Loch Lloyd north residential development; fill material placement in tributary of Mill Creek/Cass Co |
| KC | M-KC | Cass | 2013 | 02/05/13 | | 874.00 | NWK-2008-1542 | \$21,850.00 | Terra Technologies/LL-J3 PANDI LLC Remitter: Swallow Tail LLC | Construction of a golf course at the Village of Loch Lloyd; fill material placement in tributary of Mill Creek/Cass Co |
| LR | O-OZ | Carter & Shannon | 2013 | 04/02/13 | | 2332.00 | 2007-00028-1 | \$58,300.00 | MoDot | Permit No. 2007-00028 modified; Route 60 in Carter & Shannon Counties |
| 2013 Total prior to New Instrument | | | | | | 4882 | | \$122,050.00 | | |

Appendix A - Status of SSTF Old Program Receipts as of December 31, 2017

| Corp Dist. | Region | County | Year | Date Received into SSTF | Juris. Acres | Mit. Crdts | Permit # | Fee Collected | Corps Applicant | Notes |
|--------------------|--------|------------------|------|-------------------------|--------------|------------------|----------------|-----------------------|-----------------|---|
| | O-SW | Polk & St. Clair | 2016 | 02/15/16 | 7.890 | | NWK-2003-01766 | \$36,655.00 | MoDot | Upgrade a 9.1 mile portion of Route 13 from tow-lane to four-lane |
| 2016 Total | | | | | 7.890 | | | \$36,655.00 | | |
| Grand Total | | | | | 91.61 | 78,981.96 | | \$5,940,520.61 | | |

Appendix B

Status of Approved Old Program Mitigation Projects as of December 31, 2017

APPENDIX B--Status of Approved Old Program Mitigation Projects as of 12/31/2017

| Proj. # | Corp Dist. | Region | Year | County | Project Description | Land- owner | Jur. Acres | Riparian Acreage Involved | Credits | Allocated Funds | Expended Funds | Funded Difference | Status |
|---------|------------|---------|------|----------|--|------------------|------------|---------------------------|---------|-----------------|----------------|-------------------|----------|
| 0001 | | M - NW | 2002 | Harrison | Streamside wetlands and associated vegetative buffers will be installed along select streams within targeted, priority watersheds in the Northwest Region. Wetland developments will serve to filter crop field run-off from tile-outlet systems to improve the water quality of associated streams. Outlet systems currently discharge directly into streams. Locations to be determined. Thirty-year agreement. Approved 04/19/02. | Fordyce, Richard | 3.00 | 12.35 | | \$20,000.00 | \$13,656.15 | \$6,343.85 | COMPLETE |
| 0002 | | O - STL | 2002 | Crawford | Two reinforced stream crossings were installed on private land along the Little Bourbeuse River. The Little Bourbeuse is a priority watershed targeted by MDC East Central Regional staff, for protection, enhancement and habitat improvements. The watershed contains a federally listed endangered species, the scaleshell mussel. Thirty-year agreement. Approved 04/19/02. | Murphy, C. Dale | 0.55 | 0.55 | | \$8,000.00 | \$4,414.32 | \$3,585.68 | COMPLETE |
| 0003 | | M - NW | 2002 | Buchanan | Project has restored and enhanced a .8 mile section of Castile Creek. Castile Creek, a targeted watershed, is considered one of the most natural and least disturbed prairie streams in the Platte River Basin. The landowners agreed to a thirty-year conservation easement to provide lasting conservation benefits. The easement will protect riparian corridor and associated stream habitat. Thirty-year easement. Approved 10/29/02. | Andrews, Kelly | 4.84 | 23.64 | | \$57,867.57 | \$20,885.00 | \$36,982.57 | COMPLETE |
| 0004 | | M - NW | 2002 | Clinton | Streambank stabilization techniques will be used to protect and restore riparian buffers, floodplain, and associated uplands on private land along the Little Platte River, an MDC targeted watershed in the Northwest Region. The landowner has agreed to donate a perpetual easement to provide lasting conservation benefits. The property is immediately downstream of MDC's Lathrop Bridge Access and adjacent to The Nature Conservancy's Trice-Dedman Memorial Woods. Perpetual easement. Approved 10/29/02. | Holman, Sam | 7.94 | 61.06 | | \$42,000.00 | \$16,734.75 | \$25,265.25 | COMPLETE |

APPENDIX B--Status of Approved Old Program Mitigation Projects as of 12/31/2017

| Proj. # | Corp Dist. | Region | Year | County | Project Description | Land- owner | Jur. Acres | Riparian Acreage Involved | Credits | Allocated Funds | Expended Funds | Funded Difference | Status |
|-------------------|------------|--------|------|----------------|---|--------------------------|--------------|---------------------------|---------|---------------------|---------------------|---------------------|----------|
| 0005 | | O - SE | 2002 | Bollinger | Streambank stabilization techniques and bendway weirs will be used to protect and restore riparian buffers along Crooked Creek. The landowner will agree to a permanent easement on the restored area and riparian corridor. Crooked Creek is a targeted watershed for MDC. Perpetual easement. Approved 10/29/02. | Kuhlmann, Tom | 1.14 | 1.14 | | \$30,000.00 | \$10,079.31 | \$19,920.69 | COMPLETE |
| 0006 | | O - SE | 2002 | Cape Girardeau | One grade control structure will be installed to protect and restore riparian buffers along Hubble Creek. The grade structure will not be installed until approximately 40 acres of adjacent riparian buffers are enrolled in the Conservation Reserve Program's, riparian buffer practice. Hubble Creek is a targeted watershed. This component is part of a larger, multi-partner effort to stabilize the stream system while maintaining healthy community growth within the watershed. Thirty-year easement. Approved 10/29/02. | Bodenstein, Art | 3.50 | 40.00 | | \$130,000.00 | \$113,490.60 | \$16,509.40 | COMPLETE |
| 2002 Total | | | | | | | 20.97 | 138.74 | | \$287,867.57 | \$179,260.13 | \$108,607.44 | |
| 0007 | | O - SW | 2003 | Dallas | Grant funds will be used to design and replace an existing low water crossing on Thomas Creek, a tributary to the Little Niangua River. Total cost of the project is estimated at \$110,000 with the majority of funding coming from the Federal Emergency Management Agency (FEMA). Improving road crossing to facilitate intra-population movements and seasonal migrations is a management and recovery goal to protect existing populations of the Niangua darter. The newly designed crossing will allow for improved sediment transport and increased stream stability. Thirty-year contract. Approved 06/02/03. | Dallas County Commission | 0.10 | 0.10 | | \$10,000.00 | \$9,940.00 | \$60.00 | COMPLETE |

APPENDIX B--Status of Approved Old Program Mitigation Projects as of 12/31/2017

| Proj. # | Corp Dist. | Region | Year | County | Project Description | Land- owner | Jur. Acres | Riparian Acreage Involved | Credits | Allocated Funds | Expended Funds | Funded Difference | Status |
|-------------------|------------|---------|------|-----------|--|-------------------------|--------------|---------------------------|---------|--------------------|--------------------|--------------------|----------|
| 0008 | | O - SW | 2003 | Taney | Grant funds will be used to establish beneficial stream practices on two adjoining landowner's property in the Tumbling Creek watershed. Practices to be established include removing livestock from the stream, development of alternative watering systems, and constructing fencing to protect/restore the riparian corridor. All of the property lies within the recharge area of the tumbling creek cave. The cave is the only known habitat for the tumbling creek cave snail, a federally listed endangered species. Two other federally listed species reside in the cave, the Indiana bat and the grey bat. Thirty-year easement. Approved 09/04/03. | Aley, Tom & Cathy | 11.70 | 37.30 | | \$50,810.00 | \$27,958.61 | \$22,851.39 | COMPLETE |
| 2003 Total | | | | | | | 11.80 | 37.40 | | \$60,810.00 | \$37,898.61 | \$22,911.39 | |
| 0009 | | O - STL | 2004 | Jefferson | Purchase the 5.87 acre Gleb tract adjacent to the Young Conservation Area. The Conservation Commission approved receipt of the donation of the tract from the MCHF at the January 2004 meeting. The tract includes a section of LaBarque Creek, a Department-identified priority watershed which is threatened for development. Purchase in Fee – title. | MDC | 1.00 | 5.87 | | \$19,250.00 | \$13,250.00 | \$6,000.00 | COMPLETE |
| 0010 | | O - SW | 2004 | Stone | A low water crossing will be renovated on Crane Creek to allow fish passage and reduced stream impacts to one of the region's remaining wild trout streams. Primary benefits beyond stream/fisheries benefits include cooperation with County officials and improved recognition of stream and riparian concerns. Thirty-year easement. Approved 6/23/04. Add'l funding approved 03/07/06. | Stone County Commission | 0.10 | 0.10 | | \$46,000.00 | \$46,000.00 | \$0.00 | COMPLETE |
| 0011 | | O - SE | 2004 | Butler | Construct bendway weirs and complete riparian corridor reforestation on private property along Tenmile Creek, a MDC targeted watershed. Project utilizes streambank stabilization techniques and targets a priority stretch of stream with a special emphasis smallmouth bass management zone. Thirty-year easement. Approved 6/23/04. | Kniebert, Richard | 1.20 | 5.50 | | \$20,000.00 | \$18,531.88 | \$1,468.12 | COMPLETE |

APPENDIX B--Status of Approved Old Program Mitigation Projects as of 12/31/2017

| Proj. # | Corp Dist. | Region | Year | County | Project Description | Land- owner | Jur. Acres | Riparian Acreage Involved | Credits | Allocated Funds | Expended Funds | Funded Difference | Status |
|---------|------------|--------|------|----------|---|--------------|------------|---------------------------|---------|-----------------|----------------|-------------------|----------|
| 0012 | | O - OZ | 2004 | Texas | Streambank stabilization project upstream of the Ozark National Scenic Riverways property along the Jack's Fork River. Bendway weirs will be used along private property owned by the local VFW Chapter to reduce sediment and improve water quality. Thirty-year easement. Approved 6/23/04. CANCELLED. | VFW | 0.00 | 0.00 | | \$0.00 | \$0.00 | \$0.00 | CANCEL |
| 0013 | | M - NW | 2004 | Harrison | This project will restore and protect a natural riparian corridor on about 42 acres of private farmland along the mainstem and spring-fed tributaries of Sugar Creek. The proposed restoration will be accomplished through a combination of 1) enrollment of 7 acres of cropland, 10 acres of pastureland into 15-year contracts for riparian buffers under the USDA's Continuous Conservation Reserve Program (CCRP), and 2) easement payments to maintain these buffers for a total of 30 years. Easement payments will also be made to protect 25 acres of existing wooded corridor for 30 years. Thirty-year easement. Approved 11/03/04. | Klindt, Ryan | 7.00 | 42.00 | | \$35,000.00 | \$32,220.03 | \$2,779.97 | COMPLETE |
| 0014 | | O - OZ | 2004 | Ripley | Partial funding of the acquisition of the Wolf-Bauman tract in partnership with the Missouri Department of Conservation would provide both watershed and riparian corridor protection for a high quality riparian site. A perpetual conservation easement will be placed on the 158-acre riparian corridor and ownership will be with the Missouri Conservation Commission. The tract has unique natural features: grey bat maternity cave, two springs, numerous fens, over 5,800 feet of frontage on the north prong of the Little Black River, mesic bottomland forest, swamp rabbits, and cane stands. The Curtis pearly mussel, pink mucket, and four other listed species of mussels are documented in the Little Black River. Acquisition – Perpetual Easement. Approved 11/03/04. CANCELLED. | Wolf/Bauman | 0.00 | 0.00 | | \$0.00 | \$0.00 | \$0.00 | CANCEL |

APPENDIX B--Status of Approved Old Program Mitigation Projects as of 12/31/2017

| Proj. # | Corp Dist. | Region | Year | County | Project Description | Land- owner | Jur. Acres | Riparian Acreage Involved | Credits | Allocated Funds | Expended Funds | Funded Difference | Status |
|-------------------|------------|---------|------|-------------------------------|---|---|--------------|---------------------------|---------|---------------------|---------------------|-------------------|----------|
| 0015 | | O - STL | 2004 | Crawford, Franklin, Gasconade | Little Bourbeuse/Brush Creek/Lick Creek: Streambank protection and aquatic habitat will be restored and protected on private lands through a watershed approach by re-establishing riparian corridor by excluding livestock, tree plantings, constructing reinforced stream crossings and alternative livestock watering systems along with cedar tree and rock bank placements. Thirty-year maintenance agreements. Approved 11/03/04. Add'l funding approved 03/16/07. | LITTLE BOURBEUSE: Baker, Bob; Bindner, Dan; Bindner, Mark; Bottom, Mike; Brewer, Brad; Copling, David; Copling, Robert; Kitchen, Floyd; Mullen, Delbert; Mullen, William; Mullen, Phil; Wellenb | 34.00 | 126.00 | | \$249,300.00 | \$250,259.39 | -\$959.39 | COMPLETE |
| 2004 Total | | | | | | | 43.30 | 179.47 | | \$369,550.00 | \$360,261.30 | \$9,288.70 | |
| 0016 | | M - CE | 2005 | Miller | Massman Slab Bridge Replacement on Tavern Creek. Structure located at a documented Niangua darter location site. Cooperative Agreement with MDC and Miller County Commission. Approved 02/11/05. Add'l funding approved 12/6/05. | Miller County | 5.20 | 0.70 | | \$106,574.55 | \$106,574.14 | \$0.41 | COMPLETE |
| 0017 | | M - NE | 2005 | Marion | Bringer Conservation Easement on properties bordering Troublesome Creek, a major tributary of the South Fabius River. Project would protect this quality stream reach containing mature wooded corridor and enhance MDC's McPike Access. Permanent Easement. Approved 02/11/05. | Bringer, Marvin and Loretta | 22.00 | 100.80 | | \$160,301.00 | \$152,085.53 | \$8,215.47 | COMPLETE |
| 0018 | | O - SW | 2005 | Greene | Located on Pomme de Terre River in northeast corner of Greene County, this is a 4th order stream and drains 49,507 acres. Accelerated erosion. Site within federally designated critical habitat for Niangua darter. Installation of 10-11 bendway weirs, riparian corridor, 8-paddock rotational grazing system, cattle to be excluded from the corridor. Partners are MDC, EQIP and landowner. MCHF funds to be used to assist with purchase of rip-rap for the bendway weirs. Special agreement. Approved 05/26/05. | McNealy, Paul Hartman, Ron Cline, Junior H. | 2.40 | 4.00 | | \$29,600.00 | \$26,262.17 | \$3,337.83 | COMPLETE |

APPENDIX B--Status of Approved Old Program Mitigation Projects as of 12/31/2017

| Proj. # | Corp Dist. | Region | Year | County | Project Description | Land- owner | Jur. Acres | Riparian Acreage Involved | Credits | Allocated Funds | Expended Funds | Funded Difference | Status |
|---------|------------|--------|------|----------|---|--------------------------|------------|---------------------------|---------|-----------------|----------------|-------------------|----------|
| 0019 | | M - CE | 2005 | Moniteau | North Moreau Creek site (about 600 feet long) has substantial soil erosion. Funds to cover bendway weir rock, hauling and installation, easement and title work, survey, installation of trees, easement purchase. Permanent easement. Approved 05/26/05. | Bleich, Fred | 1.75 | 2.25 | | \$78,283.13 | \$47,780.30 | \$30,502.83 | COMPLETE |
| 0020 | | M - CE | 2005 | Cole | North Moreau Creek site (about 400 feet long) has substantial soil erosion. Funds to cover bendway weir rock, hauling and installation, easement and title work, survey, installation of trees, easement purchase. Permanent easement. Approved 05/26/05. | Bleich, Terry and Tammy | 1.40 | 2.00 | | \$37,475.00 | \$30,443.58 | \$7,031.42 | COMPLETE |
| 0021 | | M - CE | 2005 | Osage | Located in lower Maries River watershed, SSTF funds will pay for 75% of installation of 10 bendway wiers to stabilize an eroding bank 1,200' long x avg. 13' high. This watershed is home to the Niangua darter, a federally endangered species. Landowner has restored riparian corridor and will donate the easement. Thirty-year easement. Approved 08/20/05. | Sennott, Rick | 15.60 | 9.70 | | \$47,500.00 | \$39,535.65 | \$7,964.35 | COMPLETE |
| 0022 | | O - SW | 2005 | Polk | Landowner operates a dairy farm on Little Pomme de Terre River, within the range of the Niangua darter, a federally endangered species. Project includes installation of a longitudinal fill stone toe protection on 255' of streambank and protection for adjoining riparian corridor. Project is within an area under a 15-yr. Federal CP22 Riparian Buffer w livestock exclusion fencing agreement currently under construction. Riparian area of .7 ac and .44 ac of stream channel will be protected for SSTF 30-yr. contract period. Special agreement. Approved 08/20/05. | Gettle, Chuck | 0.44 | 4.90 | | \$7,585.00 | \$4,345.39 | \$3,239.61 | COMPLETE |
| 0023 | | O - SW | 2005 | Dallas | Located on Niangua River immediately upstream from Hico Ford, this project will stabilize 275' section of streambank upstream from an existing low-water crossing currently threatened by structural failure and located within the federally designated critical habitat for the Niangua darter. Special agreement. Approved 08/20/05. | Dallas County Commission | 0.57 | 0.00 | | \$13,500.00 | \$11,415.20 | \$2,084.80 | COMPLETE |

APPENDIX B--Status of Approved Old Program Mitigation Projects as of 12/31/2017

| Proj. # | Corp Dist. | Region | Year | County | Project Description | Land- owner | Jur. Acres | Riparian Acreage Involved | Credits | Allocated Funds | Expended Funds | Funded Difference | Status |
|-------------------|------------|---------|------|-----------|--|---|--------------|---------------------------|-------------|---------------------|---------------------|--------------------|----------|
| 0024 | | O - STL | 2005 | Jefferson | Proposed acquisition of 200-acre Cyrus tract which includes 2,400' of LaBarque Creek, a permanent flowing Ozark border stream which supports 42 species of fish, for watershed protection. Acquisition/Permanent Easement. Approved 08/20/05. Add'l funding approved 03/16/07. | Cyrus, George (acreage on Cyrus tract only) | 5.20 | 33.10 | | \$181,500.00 | \$182,135.20 | -\$635.20 | COMPLETE |
| 0025 | | M - CE | 2005 | Osage | Located in the lower Maries River watershed 4 miles south of Westphalia, SSTF funds will cover 50% of installation of 7 bendway wiers to stabilize eroding bank 1,000' long x avg. 10' high. Landowners will donate the easement. Thirty-year easement. Approved 12/06/05. Add'l funding approved 03/16/07. | Jeffries, Michael & Rowan, Kenneth | 14.10 | 2.50 | | \$14,948.00 | \$20,873.00 | -\$5,925.00 | COMPLETE |
| 0026 | | O - SW | 2005 | Greene | Ward Branch urban stream restoration in James River watershed. Table Rock Lake is the receiving water body. SSTF funds to be used for bank sloping, rock placement and corridor planting. MDC, Greene County and City of Springfield are partners. Special Agreement. Approved 12/06/05. | Twin Oaks Country Club | 0.49 | 1.00 | | \$40,000.00 | \$36,342.53 | \$3,657.47 | COMPLETE |
| 2005 Total | | | | | | | 69.15 | 160.95 | 0.00 | \$717,266.68 | \$657,792.69 | \$59,473.99 | |
| 0027 | | M - NE | 2006 | Knox | Construction of reinforced stream crossing at Troublesome Creek (South Fabius watershed) in return for protection on 0.75 miles of stream channel (3.6 acres) and 15.2 acres of riparian corridor. Special Agreement. Approved 03/07/06. | Troublesome Farms, LLC | 3.60 | 15.20 | | \$3,250.00 | \$4,369.07 | -\$1,119.07 | COMPLETE |
| 0028 | | M - CE | 2006 | Cooper | West Brush Creek bendway weir project for actively eroding 12-foot high stream bank. Part of upper Moniteau Creek Agricultural Non-Point Source Special Area Land Treatment (AgNPS SALT) area. Permanent Easement. Approved 03/07/06. | Schmidt, Kevin | 1.75 | 2.75 | | \$38,702.00 | \$28,065.40 | \$10,636.60 | COMPLETE |

APPENDIX B--Status of Approved Old Program Mitigation Projects as of 12/31/2017

| Proj. # | Corp Dist. | Region | Year | County | Project Description | Land- owner | Jur. Acres | Riparian Acreage Involved | Credits | Allocated Funds | Expended Funds | Funded Difference | Status |
|---------|------------|---------|------|-----------|---|------------------------------|------------|---------------------------|---------|-----------------|----------------|-------------------|----------|
| 0029 | | O - OZ | 2006 | Phelps | Proposed acquisition of 168 acres of Bohigian tract (168 x \$2,096/acre) which includes 1.26 miles of Mill Creek, a Blue Ribbon Trout Area containing a population of naturally-reproducing rainbow trout, plus Hudgens Spring and two smaller springs, etc. Outside funding to be used toward acquisition of total 477-acre tract. Acquisition. Approved 06/06/06. | Bohigian, George | 17.00 | 151.00 | | \$352,128.00 | \$352,158.00 | -\$30.00 | COMPLETE |
| 0030 | | O - SW | 2006 | Greene | James River bendway weir project for accelerated erosion at this 1,150' site in southeast Greene County. This is a 5th order stream which drains approx. 140,925 acres (220 square miles), is one of the largest remaining free-flowing streams in the White River Basin and supports a number of White River endemic species. Special Agreement. Approved 06/06/06. | Hopkins, John Mehlhorn, Gary | 1.80 | 6.10 | | \$40,000.00 | \$32,343.24 | \$7,656.76 | COMPLETE |
| 0031 | | O - SW | 2006 | Barry | Flat Creek bendway weir project for accelerated erosion at this site. This is a 4th order stream which drains 58,283 acres (91.1 square miles) and the watershed contains the federally threatened and state endangered Ozark Cavefish. Flat Creek drains directly into Table Rock Lake. Special Agreement. Approved 06/06/06. CANCELLED. | Hubbs, Sheryl | 0.00 | 0.00 | | \$0.00 | \$0.00 | \$0.00 | CANCEL |
| 0032 | | M - CE | 2006 | Maries | Maries River bendway weir project to stabilize 1,200' length of stream with actively eroding 10' high stream bank next to hay field. Landowner to establish 50' riparian corridor utilizing USDA CCRP. Project not to be installed during spawning period of Niangua Darter. Special Agreement. Approved 09/12/06. | Renneke, Anthony | 14.00 | 2.40 | | \$27,000.00 | \$24,588.75 | \$2,411.25 | COMPLETE |
| 0033 | | O - STL | 2006 | Jefferson | Proposed acquisition of 11.3 acres (up to \$17,100/acre), a portion of two tracts which contain over 1,600' of LaBarque Creek adjacent to Young CA. Conditioned upon MDC's purchase of the balance of 14.97 acres. Acquisition. Approved 09/12/06. | Oberkramer, Don | 0.90 | 11.30 | | \$193,240.00 | \$193,240.00 | \$0.00 | COMPLETE |

APPENDIX B--Status of Approved Old Program Mitigation Projects as of 12/31/2017

| Proj. # | Corp Dist. | Region | Year | County | Project Description | Land- owner | Jur. Acres | Riparian Acreage Involved | Credits | Allocated Funds | Expended Funds | Funded Difference | Status |
|-------------------|------------|--------|------|---------|--|----------------------------|--------------|---------------------------|-------------|---------------------|---------------------|-------------------|----------|
| 0034 | | O - SW | 2006 | Hickory | Funding to offset the additional cost of a clear-span structure versus replacement of an existing low water crossing on County Road 200, facilitating intra-population movements of the Niangua darter on the Little Niangua River. Special Agreement. Approved 12/05/06. | Hickory County Commission | 12.10 | 0.00 | | \$30,000.00 | \$30,000.00 | \$0.00 | COMPLETE |
| 0035 | | M - NE | 2006 | Knox | Easement on high-quality tract of riparian corridor located on Troublesome Creek in the South Fabius watershed. This is one of the best stream resources in northern Missouri, which boasts excellent populations of native mussels and catfish. Permanent Easement. Approved 12/05/06. | Troublesome Farms, LLC | 3.30 | 40.40 | | \$43,560.00 | \$54,421.22 | -\$10,861.22 | COMPLETE |
| 0036 | | M - NE | 2006 | Knox | Easement on high-quality tract of riparian corridor located on Troublesome Creek in the South Fabius watershed. This is one of the best stream resources in northern Missouri, which boasts excellent populations of native mussels and catfish. Permanent Easement. Approved 12/05/06. | Wedemeier, Herb and Leslie | 0.60 | 7.50 | | \$7,425.00 | \$10,443.63 | -\$3,018.63 | COMPLETE |
| 2006 Total | | | | | | | 55.05 | 236.65 | 0.00 | \$735,305.00 | \$729,629.31 | \$5,675.69 | |
| 0037 | | M - NW | 2007 | Linn | Placement of two grade control structures in the pirating headcut channel from Higgins Ditch to Locust Creek and notching of two levees on the east side of Locust Creek to restore hydrology and protect wetlands in the park. Without project, complete loss of Locust Creek through park is probable. Special Agreement. Approved 03/16/07. Add'l funding approved 06/22/07. | DNR-Pershing State Park | 451.00 | 517.00 | | \$259,099.00 | \$186,581.20 | \$72,517.80 | COMPLETE |
| 0038 | | O - SE | 2007 | Perry | The L-A-D Foundation has a contract to acquire 40± acres adjacent to Ball Mill Resurgence National Area, which is currently managed by MDC's Forestry Division. SSTF funds would serve as reimbursement to the LAD Foundation for the purchase of riparian habitat and stream reach. Acquisition. Approved 04/02/07. | L-A-D Foundation | 0.80 | 3.00 | | \$7,500.00 | \$7,500.00 | \$0.00 | COMPLETE |

APPENDIX B--Status of Approved Old Program Mitigation Projects as of 12/31/2017

| Proj. # | Corp Dist. | Region | Year | County | Project Description | Land- owner | Jur. Acres | Riparian Acreage Involved | Credits | Allocated Funds | Expended Funds | Funded Difference | Status |
|-------------------|------------|---------|------|-----------|---|---|---------------|---------------------------|------------------|---------------------|---------------------|--------------------|----------|
| 0039 | | M - NE | 2007 | Macon | Construction of reinforced stream crossing across Long Branch Creek (Long Branch/East Fork Little Chariton River watershed) and an easement for protection on 0.49 miles of Long Branch Creek and 0.17 miles unnamed streams. Permanent Easement. Approved 06/22/07. | Mohan, Thomas | 4.76 | 24.60 | 4,070.00 | \$27,378.00 | \$62,400.57 | -\$35,022.57 | COMPLETE |
| 0040 | | O - OZ | 2007 | Shannon | Stabilization of eroding streambank on Jacks Fork River at campsite area located in Ozark National Scenic Riverways system. Special Agreement. Approved 09/07/07. | City of Eminence | 3.50 | 3.20 | 3,378.00 | \$18,455.00 | \$21,302.25 | -\$2,847.25 | COMPLETE |
| 0041 | | M - CE | 2007 | Miller | Barren Fork creek low-water crossing removal and free-span bridge replacement on Sequoia Road across Barren Fork Creek. Special Agreement. Approved 12/6/07 | Miller County | 13.90 | 0.00 | 5,400.00 | \$35,000.00 | \$35,000.00 | \$0.00 | COMPLETE |
| 0042 | | O - OZ | 2007 | Texas | Land acquisition of Johnson tract - 3-sided inholding on the Eck CA approx. 850 ft. of frontage on the Big Piney River. Acquisition. Approve 12/6/07 | Johnson, Mitchell | 1.00 | 1.00 | 792.00 | \$5,000.00 | \$5,000.00 | \$0.00 | COMPLETE |
| 0043 | | M - NE | 2007 | Macon | Construction of light equipment crossing across Long Branch Creek and perpetual easement on approx. 41.6 acres uneven-aged timber, wooded riparian corridor, wooded wetlands and stable stream channel. Permanent Easement Approve 12/6/07 | Wyatt, Robert and Ruth | 41.60 | 41.60 | 8,659.00 | \$45,438.00 | \$56,267.43 | -\$10,829.43 | COMPLETE |
| 2007 Total | | | | | | | 516.56 | 590.40 | 22,299.00 | \$397,870.00 | \$374,051.45 | \$23,818.55 | |
| 0044 | STL | O - STL | 2008 | Jefferson | Land acquisition of LaBarque Creek Watershed - Protection purchasing over 3600 ft of labarque creek adjacent to Young CA partners include Holcim Settlement and forest legacy and MDC total project \$1,700,000 Acquisition Approve 2/22/08 | Wild Canid Research and Survival Center | 5.80 | 50.74 | 10,834.00 | \$280,000.00 | \$280,000.00 | \$0.00 | COMPLETE |
| 0045 | LR | O - OZ | 2008 | Shannon | Land acquisition of Horse Creek area adjacent to Angeline CA, in Current River Watershed stream joins the Jacks Fork River which is part of Ozark National Scenic Riverways syst. Partnered with ABC, TNC, and MDC. Acquisition Approve 2/22/08 | Lamping, Brent J. | 0.00 | 37.00 | 4,096.00 | \$55,500.00 | \$55,500.00 | \$0.00 | COMPLETE |

APPENDIX B--Status of Approved Old Program Mitigation Projects as of 12/31/2017

| Proj. # | Corp Dist. | Region | Year | County | Project Description | Land- owner | Jur. Acres | Riparian Acreage Involved | Credits | Allocated Funds | Expended Funds | Funded Difference | Status |
|---------|------------|--------|------|----------|--|------------------------|------------|---------------------------|-----------|-----------------|----------------|-------------------|----------|
| 0046 | KC | M - CE | 2008 | Cooper | Construction of Free-Span Bridge and removal of low water crossing on Sandbank Drive across Draffen Branch (Moniteau Creek tributary) in Cooper County. Improve passage for aquatic life including Topeka Shiner. (to MCHF Board May 7, 2008). Partnered with Cooper County Commission, (\$20,000), MDC (\$30,000), & US FWS (\$45,000). Approved May 7, 2008 | Cooper County | 0.01 | 0.00 | 5,400.00 | \$43,500.00 | \$43,500.00 | \$0.00 | COMPLETE |
| 0047 | LR | O - SW | 2008 | Lawrence | Design & Install a grade control structure to stabilize the streambeds of Center Creek (Spring River watershed) & provide a stable crossing for light equipment & livestock. Approved 8/14/08 | McKnight, Jerry | 2.40 | 7.10 | 10,707.00 | \$50,000.00 | \$19,012.79 | \$30,987.21 | COMPLETE |
| 0048 | KC | O - SW | 2008 | Polk | Installation of a rip rap rock stabilization structure(s) as designed by a certified engineering firm or MDC engineers to stabilize 330 ft of eroding bank of Little Wilson Creek in Pomme de Terre watershed. Approved 8/14/08 | Armfield, Alberta | 0.70 | 0.00 | 914.00 | \$50,000.00 | \$17,640.89 | \$32,359.11 | COMPLETE |
| 0049 | KC | O - SW | 2008 | Lawrence | Installing grade control structures to stabilize the streambed of Cracker Neck Branch & the 2nd order tributary (Sac River watershed) & to provide stable crossings for light equipment. Approved 8/14/08 | Clayton, Gordon | 5.00 | 13.60 | 8,176.00 | \$50,000.00 | \$14,423.70 | \$35,576.30 | COMPLETE |
| 0050 | KC | M - NW | 2008 | Clinton | Funding for title search, survey, and recording fees associated with a donated perpetual conservation easement on about 18 acres of wooded stream corridor along the Little Platte River. Approved 12/4/08 | Robinson, Joe & Laura | 0.50 | 18.00 | 2,776.00 | \$5,275.00 | \$1,564.00 | \$3,711.00 | COMPLETE |
| 0051 | KC | M - CE | 2008 | Boone | Forested riparian corridor addition, Moon Valley Lake dam removal, and eroding stream bank stabilization to restore a reach of Hominy Branch. Purchase easement to be held by MDC. Approved 12/4/08 | Rogers, Margaret | 2.50 | 20.00 | 16,654.00 | \$37,890.00 | \$31,999.60 | \$5,890.40 | COMPLETE |
| 0052 | KC | M - KC | 2008 | Johnson | Clear Fork Creek Riparian Restoration Easement / Cattle Exclusion - Riparian corridor planting costs, alternative watering in the form of 2 ponds with freeze proof tanks & fencing, 1 reinforced stream crossing, gully repair costs, & fencing pastures for stream exclusion. Approved 12/4/08 | Corson, Philip & Dixie | 6.10 | 78.20 | 50,351.00 | \$138,741.90 | \$117,524.18 | \$21,217.72 | COMPLETE |

APPENDIX B--Status of Approved Old Program Mitigation Projects as of 12/31/2017

| Proj. # | Corp Dist. | Region | Year | County | Project Description | Land- owner | Jur. Acres | Riparian Acreage Involved | Credits | Allocated Funds | Expended Funds | Funded Difference | Status |
|-------------------|------------|--------------|------|-----------------------------|--|---|--------------|---------------------------|-------------------|-------------------|-------------------|---------------------|----------|
| 0053 | STL | M/O - CE/STL | 2008 | Crawford/Franklin/Gasconade | Improve, restore & protect 30,000 ft of riparian corridor / stream for mussels & other species. Partners will work together with landowners wanting to install best management practices. Approved 12/4/08 | Lower Bourbeuse COA Watershed Committee | N/A | 34.43 | | \$65,000.00 | \$60,821.30 | \$4,178.70 | COMPLETE |
| 0054 | STL | O - STL | 2008 | Jefferson | LaBarque Creek Watershed Protection - Purchase of Gardner tract to connect MDC Young CA with Wild Canid property opening up potential greenway possibilities while protecting valuable riparian corridor along LaBarque Creek. Partner funds from MDC and Times Beach Settlement Funds. Land Acquisition. Approved 12/4/08. | Gardner, Kim | 2.30 | 12.09 | 5,834.00 | \$138,000.00 | \$138,000.00 | \$0.00 | COMPLETE |
| 2008 Total | | | | | | | 25.31 | 271.16 | 115,742.00 | 913,906.90 | 779,986.46 | \$133,920.44 | |
| 0055 | LR | O - SW | 2009 | McDonald | Indian Creek Streambank Stabilization - Upstream from Town hole Access Aquatic COA - Installation of 3 bendway weirs to protect the toe and reduce bank velocities along the rapidly eroding bend - Partner funds from NRCS (CCRP). Approved 3/4/09. | Taylor, Matthew | 0.00 | 0.00 | | 0.00 | | \$0.00 | CANCEL |
| 0056 | LR | O - OZ | 2009 | Ripley | Wolf/Bauman Tract in the Little Black River Watershed - Partial funding of the acquisition in partnership w/ MDC. Approved 3/4/09. | Erwin & Thiema BaumanTrust | 27.00 | 166.00 | 22,338.00 | 182,875.00 | 182,875.00 | \$0.00 | COMPLETE |
| 0057 | KC | O - STL | 2009 | Warren | Muhm Conservation Easement - Funding for stewardship fees & other easement-related expenses - Permanent easement held by Ozark Regional Land Trust. Approved 3/4/09. | Muhm, Yale & Alicia | 5.30 | 169.70 | 23,737.00 | 49,850.00 | 49,850.00 | \$0.00 | COMPLETE |
| 0058 | KC | O - SW | 2009 | Dallas | Berry Tract - Land Acquisition in partner with MDC - Partial funding for 275 acres along the Niangua River adjoining Berry Bluff CA and Lead Mine CA. Approved 3/4/09. | Berry, Tom | 20.60 | 54.40 | 21,175.00 | 170,018.25 | 170,018.25 | \$0.00 | COMPLETE |
| 0059 | KC | O - OZ | 2009 | Wright | Woods Fork of Gasconade River - Installation of rock structures to correct stream bank erosion problems - Additional funding from Wright County SWCD (\$5,000) - secured by 30-year special agreement. Approved 5/18/09. | Jones, Scott & Gail | 4.50 | 9.10 | 6,331.00 | 59,000.00 | 16,409.20 | \$42,590.80 | COMPLETE |
| 0060 | STL | O - SE | 2009 | Cape Girardeau | Installation of rock structures to correct stream bank erosion problem on Whitewater River - secured by permanent easement - Partner funds (\$5877.30) from Farm Service Agency (CRP). Approved 5/18/09. | Wills, Adrian | 6.10 | 21.50 | 7,794.00 | 65,285.00 | 33,458.30 | \$31,826.70 | COMPLETE |

APPENDIX B--Status of Approved Old Program Mitigation Projects as of 12/31/2017

| Proj. # | Corp Dist. | Region | Year | County | Project Description | Land- owner | Jur. Acres | Riparian Acreage Involved | Credits | Allocated Funds | Expended Funds | Funded Difference | Status |
|-------------------|------------|--------|------|---------|--|------------------------------------|--------------|---------------------------|------------------|-------------------|-------------------|-------------------|----------|
| 0061 | LR | O - OZ | 2009 | Shannon | Mahans Creek Watershed Restoration - Partnered with MDC and NRCS to apply for EQIP funds to provide watershed, streambank, riparian, and livestock exclusion work to landowners in the watershed. Approve 5/18/09. | Various | PENDING | PROJECTS | | 0.00 | | \$0.00 | CANCEL |
| 0062 | SW | O - SW | 2009 | Barry | Daymen Stabilization / Restoration - Easement and recording fees to stabilize the eroding stream bank on Flat Creek at the Stubblefield Access - Partner funds (\$33,000) from MDC. Approved 8/27/09. | Daymen, David | 1.40 | 1.00 | 1,347.00 | 700.00 | 909.10 | -\$209.10 | COMPLETE |
| 0063 | LR | O - OZ | 2009 | Shannon | Replace low water crossing on Mahans Creek with an at-grade, armored stream crossing utilizing concrete mattresses - Partner funds (\$4,800 in-kind labor & \$2,200 base rock) from Shannon County Commission. Approved 12/8/09. | Shannon County | 0.75 | 0.00 | 3,038.00 | 23,600.00 | 22,041.50 | \$1,558.50 | COMPLETE |
| 0064 | LR | O - SW | 2009 | Newton | Livestock exclusion & permanent protective easement for 180 ft width of vegetated riparian corridor along Shoal Creek. Approved 12/8/09. | Walker, Aaron - Lakeview Farms LLC | 0.00 | 0.00 | | 0.00 | | \$0.00 | CANCEL |
| 0065 | KC | O - SW | 2009 | Dallas | Replace low water crossing over Niangua River at Williams Ford with a clear-span bridge - Partner funds (\$55,000) from Dallas County Commission, (\$144,900 federal stimulus funds) from ARRA, & (\$10,000) from MDC. 30-yr easement. Approved 12/8/09. | Dallas County Commission | N/A | N/A | 2,059.00 | 50,000.00 | 50,000.00 | \$0.00 | COMPLETE |
| 0066 | KC | O - SW | 2009 | Dallas | Replace low water crossing over Little Niangua River at Dallas County School Road with a clear-span bridge - Partner funds (\$25,000) from Dallas County Commission, (\$85,000) from USFWS & (\$20,000 of in-kind match & monitoring) from MDC. 30-yr easement. Approved 12/8/09. | Dallas County Commission | N/A | N/A | 746.00 | 50,000.00 | 50,000.00 | \$0.00 | COMPLETE |
| 2009 Total | | | | | | | 65.65 | 421.70 | 88,565.00 | 651,328.25 | 575,561.35 | 75,766.90 | |
| 0067 | LR | O - OZ | 2010 | Carter | Cattle exclusion, streambank stabilization, improved cattle crossings, riparian corridor protection & re-establishment, and alternative watering installation. Partner funds (\$30,076) from Carter County SWCD, USFWS, & MODOT. Perpetual easement. Approved 5/12/10. | Gibbs, Allen Wayne | 11.00 | 23.00 | 12,344.00 | 118,567.00 | 84,347.85 | 34,219.15 | COMPLETE |
| 0068 | STL | O - OZ | 2010 | Phelps | Little Dry Fork Stream Stabilization - Rock for the longitudinal peaked stone toe, toe rock stabilization structure, & livestock limited access point. Approved 5/12/10. | Hodges, Charles | 1.00 | 8.50 | 6,154.00 | 21,586.50 | 19,967.74 | 1,618.76 | COMPLETE |

APPENDIX B--Status of Approved Old Program Mitigation Projects as of 12/31/2017

| Proj. # | Corp Dist. | Region | Year | County | Project Description | Land- owner | Jur. Acres | Riparian Acreage Involved | Credits | Allocated Funds | Expended Funds | Funded Difference | Status |
|-------------------|------------|--------|------|----------------|--|--|--------------|---------------------------|------------------|-------------------|-------------------|-------------------|----------|
| 0069 | STL | O - SE | 2010 | Cape Girardeau | James Johnson Project - Installation of bendway weirs or structures to stabilize the stream bank. 20 acre Permanent Easement. Approved 8/26/10. | Johnson, James | 3.60 | 20.00 | 5,664.00 | 44,800.00 | 41,203.76 | 3,596.24 | COMPLETE |
| 0070 | KC | O - OZ | 2010 | Phelps | Haslag Conservation Easement - Perpetual easement and stream bank stabilization to secure the creeks from development in the City of Rolla Sports Complex. Approved 8/26/10. | Haslag, Ralph | 2.90 | 23.50 | 3,887.00 | 23,785.00 | 27,874.70 | -4,089.70 | COMPLETE |
| 0071 | KC | O - SW | 2010 | Dallas | Replace low water crossing over Little Niangua River at Dallas County Prosperity Road with a clear-span bridge - Partner funds (\$25,000) from Dallas County Commission, (875,000) from USFWS & (\$10,000) from MDC. 30-yr easement. Approved 12/03/10. | Dallas County Commission | N/A | N/A | 2,300.00 | 95,000.00 | 95,528.00 | -528.00 | COMPLETE |
| 2010 Total | | | | | | | 18.50 | 75.00 | 30,349.00 | 303,738.50 | 268,922.05 | 34,816.45 | |
| 0072 | KC | O - OZ | 2011 | Phelps | Remove a low-water-slab stream crossing from Dry Fork creek and construct a light equipment and livestock stram crossing in the footprint of the old slab crossing - Partner funds (\$10,000) from USFWS (pending approval). 30-yr easement. Approved 2/25/11. | Scott Dickerhoff | 1.80 | N/A | 3,328.00 | 10,000.00 | 9,242.75 | \$757.25 | COMPLETE |
| 0073 | LR | O - OZ | 2011 | Howell | Perkins Project - Proposed by Ozark Region Land Trust (ORLT); Perkins family desires to sell a conservation easement on the land (383 acres) that would limit development, protect forest cove, and keep their land intact. They are not interested in selling to the USFS (bordering land holder) at this time. Partner funds (\$50,000) ORLT private donor. Total cost/acre esimated at \$630. Perpetual Easement. Approved 8/24/2011 | Kazie Perkins | 0.00 | 0.00 | | 0.00 | | \$0.00 | CANCEL |
| 0074 | LR | O - OZ | 2011 | Dent | Dent County Road 5680 Bridge over Sinking Creek. Replace existing low water crossing located on Dent County Road 5680 over Sinking Creek in Dent County with a low water bridge. Total project funds: \$240,000. Partner funds: \$175,000 US Forest Service (requested), \$10,000 MDC Wildlife Diversity Funds, \$5,000 MDC in-kind contribution, \$15,000 Dent County Commission in-kind contribution. Special Agreement. Approved 8/24/2011 | Dent County Commission Attn: Dennis Purcell | 0.30 | 1.00 | 5,400.00 | 35,000.00 | 35,000.00 | \$0.00 | COMPLETE |

APPENDIX B--Status of Approved Old Program Mitigation Projects as of 12/31/2017

| Proj. # | Corp Dist. | Region | Year | County | Project Description | Land- owner | Jur. Acres | Riparian Acreage Involved | Credits | Allocated Funds | Expended Funds | Funded Difference | Status |
|-------------------|------------|--------|------|----------------|--|---------------------------------|-------------|---------------------------|------------------|-------------------|-------------------|-------------------|---------------------|
| 0075 | LR | O-SW | 2011 | Dallas | Dallas County Griffith Road Low Water Crossing Replacement Project. Replace low water crossing located on Dallas County Road over the Little Niangua River in Dallas County with a newly designed crossing that will allow for improved sediment transport and increased stream stability. Total project funds: \$200,000. Partner funds: \$25,000 Dallas County Commission; \$85,000 USFWS (pending approval); \$10,000 MDC (in-kind). Special Agreement. Approved 12/9/2011 | Dallas County Commission | N/A | N/A | 4,703.40 | 80,000.00 | 80,000.00 | \$0.00 | COMPLETE |
| 0076 | STL | O-SE | 2011 | Cape Girardeau | McSpadden Tract Project. Acquisition of property in Eastern Cape Girardeau County along the Mississippi River between Trail of Tears State Park & Windy Bar Island CA. Partner funds: USFWS RLA \$662,825; American Land Conservancy contribution from Boeing \$13,000. Approved 12/9/2011 | Pat McSpadden | 0.00 | | | 0.00 | | \$0.00 | CANCEL |
| 2011 Total | | | | | | | 2.10 | 1.00 | 13,431.40 | 125,000.00 | 124,242.75 | 757.25 | |
| 0077 | STL | O-STL | 2012 | Jefferson | LaBarque Creek Watershed Protection Project. Acquisition of two tracts (total 160A) which are currently for sale; the tracts contain 3,194 ft of LaBarque Creek and 2,555 ft of tributary frontage, and bridge the gap between LaBarque Creek CA and Don Robinson State Park. Partner funds: ORLT \$5,000; Open Space Council & Friends of LBQ Creek \$100,000, TBD \$149,250. Approved 2/24/2012 | Jeanne McIlVain and Beth Morrow | 3.30 | 79.20 | 12,775.58 | 249,480.00 | 249,480.00 | \$0.00 | COMPLETE |
| 0078 | STL | O-SE | 2012 | Iron | Craig Claney Project. Big Creek Watershed: 1) Bendway Weirs or Toe Rock - design/installation to stabilize the stream bank; 2) Riparian Buffers - restoration and protection of 180 ft wide riparian buffer and the stream bank secured through permanent easement with MDC, appx 18 acres will be rolled into the easement. Partner funds: Farm Service Agency (CRP) \$3,732.84. Permanent Easement. Approved 5/11/2012 | Craig Claney | 3.20 | 15.00 | 2,392.50 | 41,540.00 | 43,289.22 | -\$1,749.22 | Easement is pending |
| 0079 | KC | M-CE | 2012 | Morgan | Haw Creek Bendway Weir Project. Establish a riparian corridor; stream bank stabilization. Haw Creek Watershed included in the Gabriel Creek Streambank Stabilization 319 grant program. Special agreement. Approved 5/11/2012. | Russell Hall | 0.52 | 3.00 | 1,170.00 | 16,604.00 | 10,821.49 | \$5,782.51 | COMPLETE |

APPENDIX B--Status of Approved Old Program Mitigation Projects as of 12/31/2017

| Proj. # | Corp Dist. | Region | Year | County | Project Description | Land- owner | Jur. Acres | Riparian Acreage Involved | Credits | Allocated Funds | Expended Funds | Funded Difference | Status |
|---------|------------|--------|------|--------|---|---|------------|---------------------------|-----------|-----------------|----------------|-------------------|---|
| 0080 | LR | O - OZ | 2012 | Dent | Dent County Road 3210 Bridge over Spring Creek (Dry Fork PW). Replace existing low water crossing located on Dent County Road 2310 over Sinking Creek in Dent County with a low water bridge. Total project funds: \$205,000. Partner funds: \$75-80,000 Unknown (MoDOT, FWS), \$30,000 Dent County Commission in-kind contribution, \$5,000 MDC in-kind contribution. Special Agreement. Approved 8/17/2012 | Dent County Commission Attn: Gary Larson | 0.40 | 1.00 | 3,807.00 | 95,182.50 | 92,850.92 | \$2,331.58 | COMPLETE |
| 0081 | STL | O-SE | 2012 | Perry | LAD Foundation Riney Tract Project. Project is in the Blue Spring Branch/Bois Brule watershed; Riney Tract will add 3.3 miles of riparian buffer protecting Blue Spring Branch. Partner funds: \$185,000 LAD and \$2,952.05 MDC. Permanent Easement. Approved 8/17/2012 | LAD Foundation | 1.40 | 25.20 | 5,430.00 | 26,334.00 | 26,334.00 | \$0.00 | COMPLETE |
| 0082 | LR | O-SW | 2012 | Dallas | Jeffries - Conservation Easement; Little Niangua River. Install streambank stablization techniques at two sites, establish reparation correider and enhance existing riparian corridor. Partner funds: \$15,000 (MDC) Permanent Easement. Approved 8/17/2012 | Brett Jeffries | 9.70 | 54.00 | 20,054.00 | 124,611.00 | 70,413.24 | \$54,197.76 | Livestock watering pending due to landowner illness |
| 0083 | KC | M-CE | 2012 | Miller | Miller Co. Pear Orchard Rd. LWC; Tavern Creek. Remove and improve passage barrier to benefit Niangua Darter habitat. Partner funds: \$25,000 (Miller Co), \$100,000 (USFWS) pending approval and \$10,000 in-kind (MDC) Special Agreement. Approved 12/7/2012 | Miller County | N/A | N/A | 7,566.00 | 100,000.00 | 143,349.00 | -\$43,349.00 | COMPLETE |
| 0084 | KC | M-CE | 2012 | Miller | Miller Co. Sequoia Rd. LWC; Tavern Creek. Remove and improve passage barrier to benefit Niangua Darter habitat. Partner funds: \$25,000 (Miller Co), \$100,000 (USFWS) pending approval and \$10,000 in-kind (MDC) Special Agreement. Approved 12/7/2012 | Miller County | N/A | N/A | 6,453.00 | 100,000.00 | 104,900.00 | -\$4,900.00 | COMPLETE |
| 0085 | KC | M-CE | 2012 | Miller | Miller Co. Tavern Ck Rd. LWC; Tavern Creek. Remove and improve passage barrier to benefit Niangua Darter habitat. Partner funds: \$25,000 (Miller Co), \$100,000 (USFWS) pending approval and \$10,000 in-kind (MDC) Special Agreement. Approved 12/7/2012 | Miller County | N/A | N/A | 6,309.00 | 100,000.00 | 112,063.80 | -\$12,063.80 | COMPLETE |
| 0086 | LR | O-SW | 2012 | Dallas | Hico Road Low Water Crossing Replacement Project; Niangua River. Removal of existing barrier in Niangua Darter habitat. Partner funds: \$35,000 (Dallas Co), \$125,000 (USFWS) pending approval and \$10,000 in-kind (MDC) Special Agreement. Approved 12/7/2012 | Dallas County Commission | N/A | N/A | 22,629.00 | 172,700.00 | 172,700.00 | \$0.00 | COMPLETE |

APPENDIX B--Status of Approved Old Program Mitigation Projects as of 12/31/2017

| Proj. # | Corp Dist. | Region | Year | County | Project Description | Land- owner | Jur. Acres | Riparian Acreage Involved | Credits | Allocated Funds | Expended Funds | Funded Difference | Status |
|---|------------|--------|------|----------|--|----------------------------------|--------------|---------------------------|-------------------|---------------------|---------------------|-------------------|----------|
| 0087 | KC | M-NW | 2012 | Caldwell | Colaw Tract Acquisition; Log Creek. This tract is an ACOA (Aquatic Conservation Opportunity Area) based on the presence of rare species and quality habitat; this acquisition would tie into the existing Bonanza CA and double MDC stream frontage ownership. Partner funds: \$106,400 (MDC) Acquisition. Approved 12/7/12 | Richard Colaw | 1.40 | 21.60 | 2,904.50 | 41,040.00 | 38,969.00 | \$2,071.00 | COMPLETE |
| 0088 | LR | O-SW | 2012 | Dallas | Shiflett Tract Acquisition; Niangua River. 300 foot-wide riparian management zone to protect and enhance riparian functions. Partner funds: \$28.185 (MDC) Acquisition. Approved 12/7/12 | Shawn Shiflett | N/A | 22.40 | 2,993.30 | 44,775.00 | 44,775.00 | \$0.00 | COMPLETE |
| 0089 | KC | M-CE | 2012 | Camden | Ballenger Tract Acquisition; Wet Glaize Creek. Protect and enhance 183.7 acres within a priority watershed bordering Toronto Springs CA; this acquisition will benefit all area aquatic species including the state listed rare species Blacknose shiner. Partner funds: \$219,540.98 (MDC) Acquisition. Approved 12/7/12 | James Ballenger | 6.50 | 177.20 | 31,392.000 | 293,734.01 | 277,552.00 | \$16,182.01 | COMPLETE |
| #0090 | KC | M-KC | 2012 | Benton | Chamberlin Tract Acquisition; Flat Creek. This tract would add to the core area (currently 1244 ac) within the PIF Model as described in the Greater Prairie Chicken Recovery Plan. Partner funds: \$486,010.07 (MDC) Acquisition. Approved 12/7/12 | John & Paula Chamberlin | 0.00 | 0.00 | | 0.00 | | \$0.00 | CANCEL |
| #0091 | KC | M-NE | 2012 | Knox | Burson Easement & Crossings; S. Fabius. Perpetual easement on 113.7 acres and two reinforced stream crossings for timber management. Partner funds: N/A Permanent Easement. Approved 12/7/12 | Burson, Wayne | 8.90 | 104.80 | 17,461.850 | 122,563.00 | 171,001.28 | -\$48,438.28 | COMPLETE |
| 2012 Total | | | | | | | 35.32 | 503.40 | 143,337.73 | 1,528,563.51 | 1,558,498.95 | -29,935.44 | |
| #0092 | KC | M-CE | 2013 | Morgan | Haw Creek Bendway Weir Project. Reduce streambank erosion, establish riparian corridor. Haw Creek Watershed included in the Gabriel Creek Streambank Stabilization 319 grant program. Partner funds: \$2,500 (Mogan Co. SWCD) Permanent Easement. Approved 5/16/2013. | Larry Oehrke | 4.00 | 7.00 | 4,386.200 | 38,350.00 | 52,478.05 | -\$14,128.05 | COMPLETE |
| #0093 | LR | O - SW | 2013 | Greene | FR 66 AOP Barrier/Bridge Replacement. Replace Greene County Bridge 0660212 on Farm Road 66 in the Little Sac River watershed. Partner funds: \$321,805.94 (Greene County Highway Department - BRO allment and soft money matches from MODOT) Special Agreement. Approved 5/16/2013. | Greene County Highway Department | 0.46 | 0.00 | 2,709.775 | 25,000.00 | 25,000.00 | \$0.00 | COMPLETE |
| 2013 Total prior to New Instrument | | | | | | | 4.46 | 7.00 | 7,095.98 | 63,350.00 | 77,478.05 | -14,128.05 | |

APPENDIX B--Status of Approved Old Program Mitigation Projects as of 12/31/2017

| Proj. # | Corp Dist. | Region | Year | County | Project Description | Land- owner | Jur. Acres | Riparian Acreage Involved | Credits | Allocated Funds | Expended Funds | Funded Difference | Status |
|-------------------|------------|--------|------|--------|---------------------|-------------|------------|---------------------------|------------|-----------------|----------------|-------------------|--------|
| Grand Total | | | | | | | 868.17 | 2,622.87 | 420,820.10 | 6,154,556.41 | 5,723,583.10 | 430,973.31 | |
| 2017 Expenditures | | | | | | | | | | | \$126,150.50 | | |

Appendix C

Status of SSTF New Program Receipts as of December 31, 2017

APPENDIX C - Status of SSTF Program Receipts as of December 31, 2017

| Corp Dist. | Region | County | Year | Date Received into SSTF | EDU | Mit. Crdts | Permit # | Fee Collected | Corps Applicant | Notes |
|--|--------|----------------|------|-------------------------|-----------------------------------|-----------------|----------------|-----------------------|---|--|
| KC | M-CE | Boone | 2013 | 08/14/13 | Ozark/Moreau/Loutre | 533.00 | NWK-2011-01568 | \$13,325.00 | JQB Construction | Allow access within a proposed residential subdivision located in an unnamed tributary to Mill Creek |
| KC | M-CE | Boone | 2013 | 08/26/13 | Ozark/Moreau/Loutre | 790.40 | NWK-2003-01414 | \$19,760.00 | MoDot | Permit No. 2003-01414 modified; Hinkson Creek |
| 2013 Total subsequent to New Instrument | | | | | | 1323.40 | | \$33,085.00 | | |
| KC | M-CE | Cole | 2014 | 01/09/14 | Ozark/Moreau/Loutre | 3370.50 | NWK-2013-791 | \$84,262.50 | Land Investments, LLC | Placement of appx 1,000 feet of culvert pipe within unnamed tributary of Wears Creek |
| STL | O-STL | St. Charles | 2014 | 03/17/14 | Central Plains/Cuivre/Salt | 5266.00 | MVS-2013-399 | \$131,650.00 | Lombardo Homes, LLC | Estates of Timberleaf Phase II |
| KC | M-KC | Johnson | 2014 | 03/17/14 | Central Plains/Blackwater/Lamine | 7902.00 | NWK-2013-00247 | \$197,550.00 | Radmacher Bros. Excavating | Development of a limestone quarry operation which will excavate and process rock for commercial sale |
| STL | O-STL | St. Louis | 2014 | 04/24/14 | Ozark/Moreau/Loutre | 6995.00 | MVS-2012-131 | \$174,875.00 | THF Florissant Development, LLC | Construction of a Wal-Mart Supercenter retail facility |
| STL | O-SE | Ste. Genevieve | 2014 | 05/12/14 | Upper St. Francis/Castor River | 1470.00 | MVS-2013-11 | \$36,750.00 | Summit Proppants, Inc | Redwing Ecological Services, Inc; Summit Proppants, Inc - Colony Church #1 |
| STL | O-STL | Jefferson | 2014 | 07/11/14 | Ozark/Meramec | 1454.00 | MSV-2013-169 | \$36,350.00 | County of Jefferson | Jefferson County Dept of Public Works; Butcher Branch Road & Bridge MODOT #26700211 |
| STL | O-STL | St. Charles | 2014 | 07/25/14 | Central Plains/Cuivre/Salt | 1720.00 | MVS-2013-707 | \$43,000.00 | Pulte Homes of St. Louis | SCI Engineering, applicant on behalf of Pulte Homes of St. Louis; Chestnut Creek residential development |
| STL | O-STL | St. Charles | 2014 | 09/26/14 | Ozark/Moreau/Loutre | 7384.20 | MVS-2013-702 | \$184,605.00 | Missouri Department of Conservation | August A. Busch Memorial CA Shooting Range Complex Renovation Project |
| LR | O-SE | Butler | 2014 | 10/22/14 | Ozark/Black/Current | 1597.00 | 2014-00244 | \$39,925.00 | Poplar Bluff School District R1 | Renovation and construction of new High School over Pike Creek |
| STL | O-STL | | 2014 | 11/04/14 | Apple/Joachim | 52.00 | MVS-2004-2380 | \$1,300.00 | Centex/Pulte Home / SCI Engineering | Fox Ridge Residential Subdivision |
| STL | O-OZ | Phelps | 2014 | 11/18/14 | Ozark/Meramec | 3953.00 | MVS-2014-295 | \$98,825.00 | MoDot | Route 8 Bridge Replacement Job Number J92221 |
| 2014 Total | | | | | | 41163.70 | | \$1,029,092.50 | | |
| LR | O-SW | Jasper | 2015 | 02/24/15 | Ozark/Osage | 1767.00 | SWL-2014-00409 | \$44,175.00 | Olsson Associates / City of Joplin | NWP No. 43 for Stormwater Management Facilities |
| STL | O-STL | St. Charles | 2015 | 03/11/15 | Cuivre/Salt | 1115.00 | MVS-2013-733 | \$27,875.00 | SSM Healthcare/SCI Engineering | Wentzville Healthplex |
| KC | M - KC | Platte | 2015 | 04/17/15 | Central Plains/Nishnabotna/Platte | 432.00 | NWK-2014-00654 | \$10,800.00 | MD Management/Flick Seed | Green Hill Road and NW Old Tiffany Springs Road |
| STL | O-STL | St. Louis | 2015 | 06/04/15 | Ozark/Meramec | 424.00 | MVS-2013-732 | \$10,600.00 | The Metropolitan St. Louis Sewer District | Laven-Del Lane Storm Water Improvements |

APPENDIX C - Status of SSTF Program Receipts as of December 31, 2017

| Corp Dist. | Region | County | Year | Date Received into SSTF | EDU | Mit. Crdts | Permit # | Fee Collected | Corps Applicant | Notes |
|-------------------|--------|-------------|------|-------------------------|-----------------------------------|-----------------|-------------------|---------------------|--|---|
| STL | O-STL | St. Louis | 2015 | 06/09/15 | Ozark/Meramec | 450.00 | MVS-2014-732 | \$11,250.00 | Midwest Testing - ELCO Chevrolet & Cadillac | Used car lot |
| STL | O-STL | Jefferson | 2015 | 06/12/15 | Apple/Joachim | 565.00 | MVS-2015-121 | \$14,125.00 | Mercy Hospital - Jefferson / Heideman Associates, Inc. | Mercy-Jefferson Hospital Expansion |
| LR | O-SW | Greene | 2015 | 07/06/15 | Ozark/White | 807.00 | 2015-00069 | \$20,175.00 | Olsson Associates / City of Springfield | Ravenwood Subdivision Stormwater Improvements |
| STL | O-STL | St. Louis | 2015 | 08/03/15 | Ozark/Moreau/Loutre | 1273.00 | MVS-2014-448 | \$31,825.00 | City of Chesterfield / Intuition and Logic | Chesterfield Creek Riparian Trail - Channel Erosion Project |
| STL | O-STL | St. Louis | 2015 | 08/26/15 | Ozark/Meramec | 693.00 | MVS-2014-837 | \$17,325.00 | SCI Engineering - Pulte Group | River Des Peres Road Subdivision |
| KC | M-NW | Andrew | 2015 | 08/27/15 | Central Plains/Nishnabotna/Platte | 1596.00 | NWK-2015-00648 | \$39,900.00 | Snyder and Associates/Andrew County | Reconstruction of bridge #02700281 |
| KC | M-KC | Platte | 2015 | 10/30/15 | Central Plains/Nishnabotna/Platte | 831.00 | NWK-2015-01572 | \$20,775.00 | A.G. Spanos Corporation/Terra Technologies | North Klamm Road Improvements |
| STL | O-STL | St. Charles | 2015 | 11/09/15 | Ozark/Moreau/Loutre | 1177.00 | MVS-2015-255 | \$29,425.00 | SCI Engineering/Knapheide Equipment Co. | Westgate Business Park Lot 2 |
| KC | M-KC | Platte | 2015 | 11/17/15 | Central Plains/Nishnabotna/Platte | 1463.00 | NWK-2014-00961 | \$36,575.00 | A.G. Spanos Corporation/Terra Technologies | The Preserve Apartment Complex Construction |
| 2015 Total | | | | | | 12593.00 | | \$314,825.00 | | |
| STL | O-STL | St. Charles | 2016 | 01/25/16 | Central Plains/Cuivre/Salt | 1786.00 | MVS-2015-457 | \$44,650.00 | SCI Engineering/McKelvey Homes | South Outer Road 364 (Villages at Montrachet) |
| KC | M-NW | Daviess | 2016 | 2/29/2016 | Grand/Chariton | 812.00 | NWK-2015-01456 | 20,300.00 | Howe Company, LLC/Davies County Commission | Davies County Bridge No. 05300011 |
| KC | M-CE | Boone | 2016 | 3/28/2016 | Moreau/Loutre | 2811.00 | 2008-01675 | 70,275.00 | A Civil Group/St. Charles Road Development, LLC | Somerset Village Residential Subdivision |
| STL | O-STL | St. Charles | 2016 | 5/5/2016 | Cuivre/Salt | 1008.00 | MVS-2013-649 | 25,200.00 | SCI Engineering, Inc./Wentzville Industrial, Inc. | Crossroads Commercial Center |
| LR | O-SW | Greene | 2016 | 12/31/2016 | Ozark/White | 3523.00 | 2000-16752-1 | 88,075.00 | Greene County Highway Department | West Republic Road Improvements |
| STL | O-STL | St. Charles | 2016 | 12/31/2016 | Cuivre/Salt | 4441.00 | MVS-2015-903 | 111,025.00 | McBride & Son Homes/SCI Engineering, Inc. | Wyndstone Residential Development |
| 2016 Total | | | | | | 14381.00 | | \$359,525.00 | | |
| KC | M-CE | Boone | 2017 | 5/18/2017 | Ozark/Moreau/Loutre | 1012.90 | NWK 2009-01175 57 | \$ 25,322.50 | Engineering Surveys & Services/Conley Road Transportation District | Conley Road Transportation Development District |

APPENDIX C - Status of SSTF Program Receipts as of December 31, 2017

| Corp Dist. | Region | County | Year | Date Received into SSTF | EDU | Mit. Crdts | Permit # | Fee Collected | Corps Applicant | Notes |
|--------------------|--------|-----------|------|-------------------------|----------------------------------|-----------------|-----------------------|-----------------------|--|--------------------------------------|
| KC | M-KC | Jackson | 2017 | 8/1/2017 | Central Plains/Blackwater/Lamine | 11067.00 | NWK-2006-02214 | \$ 276,675.00 | B&G Land Development, LLC | Multi-phased residential development |
| STL | O-STL | Jefferson | 2017 | 11/28/2017 | Ozark/Meramec | 856.00 | MVS-2016-930 | \$ 21,400.00 | Payne Family Homes/SCI Engineering, Inc. | OTT Property |
| STL | O-STL | Iron | 2017 | 12/14/2017 | Upper St. Francis/Castor River | 3907.56 | MVS-2008-826 (P-2969) | \$ 97,689.00 | Specialty Granules LLC | Expansion of SGI's active quarry |
| 2017 Total | | | | | | 16843.46 | | \$421,086.50 | | |
| GRAND TOTAL | | | | | | 86304.56 | | \$2,157,614.00 | | |

Appendix D

Status of Approved New Program Mitigation Projects as of December 31, 2017

APPENDIX D - Status of Approved New Program Mitigation Projects as of December 31, 2017

| Proj. # | COE Dist. | Region | Year | County | Project Description | COE/IRT Approval Date | Credits | EDU | Stream | Allocated Funds | Expended Funds | Released Credits to date | Status |
|--|-----------|--------|------|-----------|---|-----------------------|----------------|--------------------------------|-------------------------|--------------------|--------------------|--------------------------|----------|
| #1001 | STL | O-SE | 2013 | Bollinger | Richard Slinkard Bank Stabilization. Bank stabilization with weirs, restoration and enhancement of ~one mile of stream footage; also reduce cattle access to localized points. Project to be used as a demonstration site to increase public appreciation/awareness. Perpetual Easement. MCHF Board Approved: 08/08/2013. COE & IRT Approved: 07/30/2014 | 7/30/2014 | 9,100.0 | Upper St. Francis/Castor River | Little Whitewater Creek | \$54,702.00 | 39,054.15 | 3,640.00 | |
| 2013 Total subsequent to New Instrument | | | | | | | 9,100.0 | | | \$54,702.00 | \$39,054.15 | | |
| #1002 | KC | M-CE | 2014 | Miller | Alan Miller Bank Stabilization. Improve channel stability near erosion site and protect integrity of channel morphology; reduce sediment loads from entering watershed and restore ~500 feet of riparian corridor. Project will increase public appreciation for stream resources. Perpetual easement. MCHF Board Approved: 02/20/2014. COE & IRT Approved: 07/06/2016. | 7/6/2016 | 7,962.0 | Ozark/Osage | Big Tavern Creek | \$65,574.50 | \$78,911.34 | 1,592.40 | |
| #1003 | LR | O-SW | 2014 | Stone | Roadhouse Road Bridge Replacement. Improve aquatic organism passage in the upper portions of Crane Creek. SSTF support of this project will enable a passage-friendly structure instead of a barrier structure planned for installation by the county. Partner funds: \$25,000 (Stone County) Special Management Agreement. MCHF Board Approved: 09/09/2014. COE & IRT Approved: 04/15/2016 | 4/15/2016 | 3,861.0 | Ozark/White | Crane Creek | \$111,500.00 | \$111,500.00 | 1,544.40 | COMPLETE |
| #1004 | KC | O-SW | 2014 | Dallas | Hayes Road Low Water Crossing Replacement. Replace a low water crossing with a clear-span bridge to facilitate fish passage in this Niangua darter habitat. Partner funds: \$62,000 (US F&W); \$25,000 (Dallas County); MDC in-kind (\$10,000) Special Management Agreement. MCHF Board Approved: 09/09/2014. COE & IRT Approved: 04/19/16 | 4/19/2016 | 11,500.0 | Ozark/Osage | Greasy Creek | \$100,000.00 | \$58,445.00 | 4,600.00 | COMPLETE |
| #1005 | KC | M-CE | 2014 | Morgan | Richland Creek Streambank Stabilization. Wayne & Rita S. Kanenbley. Provide rock-based stabilization on ~550 feet of stream bank to reduce sediment inputs, improving aquatic habitats and water quality. This project will also provide ~nine acres of stream bank to be placed into a perpetual conservation easement. Partner funds: \$5,000 (Morgan County S&WD) Perpetual Easement. MCHF Board Approved: 12/02/2014. COE & IRT Approved: 07/08/2016 | 7/8/2016 | 6,179.0 | Blackwater/Lamine | Richland | \$39,250.00 | \$46,217.46 | 1,225.80 | |

APPENDIX D - Status of Approved New Program Mitigation Projects as of December 31, 2017

| Proj. # | COE Dist. | Region | Year | County | Project Description | COE/IRT Approval Date | Credits | EDU | Stream | Allocated Funds | Expended Funds | Released Credits to date | Status |
|-------------|-----------|--------|------|-----------|---|-----------------------|-----------------|--------------------------------|---------------------------|---------------------|---------------------|--------------------------|----------|
| #1006 | KC | M-CE | 2014 | Cooper | Round Hill Road Low Water Crossing. Cooper County. Replacement of an existing low water crossing at Round Hill Road with a newly designed, clear-span crossing to facilitate fish and other aquatic organism passage and allow for improved water conveyance and sediment transport. Partner funds: \$200,00 (Cooper County Commission); \$100,000 (US Fish & Wildlife Service); \$2,500 in-kind (MDC) Special Management Agreement. MCHF Board Approved: 12/02/2014. COE & IRT Approved: 12/22/2015 | 12/22/2015 | 6,058.0 | Moreau/Loutre | Moniteau and Culley Creek | \$100,000.00 | \$77,730.10 | 6,058.00 | COMPLETE |
| 2014 | | | | | | | 35,560.0 | | | \$416,324.50 | \$372,803.90 | | |
| #1007 | KC | O-SW | 2015 | Hickory | Wolfe Tract Acquisition. Hickory County. Acquisition of riparian acreage of Wolfe Tract, addition to Mule Shoe Conservation Area. MDC purchase of the remaining portion of the tract. Partner funds: \$73,350 (MDC) Acquisition. MCHF Board Approved: 05/19/2015. COE & IRT Approved: 05/09/2016 | 5/9/2016 | 4,508.0 | Ozark/Osage | Little Niangua River | \$34,650.00 | \$33,045.71 | 4,508.00 | COMPLETE |
| #1008 | KC | O-SW | 2015 | Dallas | Engle Road Low Water Crossing Replacement Project, Greasy Creek. Dallas County. Replacement of low water crossing with a clear span bridge in Niangua darter habitat. Partner funds: \$100,000 (USFWS) and \$25,000 (Dallas County Commission) Special Management Agreement. MCHF Board Approved: 08/18/2015. COE & IRT Approved: 02/18/2016 | 2/18/2016 | 15,198.4 | Ozark/Osage | Greasy Creek | \$100,000.00 | \$120,191.75 | 6,079.38 | COMPLETE |
| #1009 | STL | O-SE | 2015 | Bollinger | Mike Kasten Bank Stabilization. Bollinger County. Stabilize eroding streambank with rock weirs, plant trees in the riparian corridor and protect with a perpetual easement. Partner Funds: N/A. Perpetual Easement. MCHF Board Approved: 12/01/2015. COE & IRT Approved: 08/31/2016 | 8/31/2016 | 8,580.0 | Upper St. Francis/Castor River | Little Whitewater Creek | \$66,241.85 | \$79,954.12 | 1,716.00 | |
| 2015 | | | | | | | 28,286.4 | | | \$200,891.85 | \$233,191.58 | | |
| #1010 | LR | O-SW | 2016 | Christian | Kipfer Bank Stabilization and Riparian Project. Christian County. Rock stabilization to heal 300' of eroding bank. Tree planting to re-establish riparian corridor. Three reinforced light equipment crossings. Partner Funds: N/A. Perpetual Easement. MCHF Board Approved: 8/16/16. COE & IRT Approved: 09/29/2017 | 9/29/2017 | 14,534.0 | Ozark/White | Bull Creek | \$95,700.00 | \$150.00 | 2,906.80 | |
| 2016 | | | | | | | 14,534.0 | | | \$95,700.00 | \$150.00 | | |

APPENDIX D - Status of Approved New Program Mitigation Projects as of December 31, 2017

| Proj. # | COE Dist. | Region | Year | County | Project Description | COE/IRT Approval Date | Credits | EDU | Stream | Allocated Funds | Expended Funds | Released Credits to date | Status |
|-------------------|-----------|--------|------|--------|--|-----------------------|-----------|-------------|---------------|-----------------|----------------|--------------------------|----------|
| #1011 | KC | O-SW | 2017 | Dallas | Dietrich Tract Acquisition; New Conservation Area. Dallas County. Acquisition of 10,032 linear feet of Niangua River stream frontage. Partner funds: \$641,535.35 (MDC) Acquisition. MCHF Board Arrproved: 05/16/17. COE & IRT Approved: 10/18/2017 | 10/18/2017 | 27,650.6 | Ozark/Osage | Niangua River | \$258,464.65 | \$258,464.65 | 16,590.36 | COMPLETE |
| 2017 | | | | | | | 27,650.6 | | | \$258,464.65 | \$258,464.65 | | |
| GRAND TOTAL | | | | | | | 115,131.0 | | | \$1,026,083.00 | \$903,664.28 | | |
| 2017 Expenditures | | | | | | | | | | | \$837,052.69 | | |

Appendix E

SSTF Investment Instruments

Appendix E

SSTF Investment Instruments

Missouri Conservation Heritage Foundation Stream Stewardship Trust Fund Investment December 31, 2017

| Old Program | | Amount |
|---|---------------------|---------------------------|
| Cash Accounts | | |
| Hawthorn Bank Checking | | \$ 116,862.76 |
| Hawthorn Bank Money Market | | \$ 62,198.34 |
| Total | | \$ 179,061.10 |
| | | |
| New Program | | Amount |
| Cash Accounts | | |
| Hawthorn Bank New Instrument Checking | | \$12,183.44 |
| Hawthorn Bank New Instrument Money Market Balance Account | | \$81,211.58 |
| Hawthorn Bank New Instrument Money Market Financial Assurance | | \$204,832.09 |
| Total Cash Accounts | | \$298,227.11 |
| | | |
| Certificates of Deposit | Amount | Maturity |
| CDARS - #1020053891 - City First Bank of D.C., NA | \$15,047.42 | 04/05/2018 |
| CDARS - #1020053891 - Mutual of Omaha Bank | \$216,583.73 | 04/05/2018 |
| CDARS - #1020053999 - City First Bank of D.C, NA | \$229,082.77 | 04/05/2018 |
| CDARS - #1020054146 - United Bank | \$143,203.35 | 04/05/2018 |
| CDARS - #1020561358 - Crestmark Bank | \$243,824.57 | 09/06/2018 |
| CDARS - #1020561358 - Signature Bank | \$6,508.66 | 09/06/2018 |
| Total Certificates of Deposit | \$854,250.50 | |
| Total | | \$1,152,477.61 |

Appendix F

How the Stream Stewardship Trust Fund Works

APPENDIX F

How the Stream Stewardship Trust Fund Works

HOW THE OLD PROGRAM WORKS

A Memorandum of Understanding between the Foundation and U.S. Army Corps of Engineers in 1999 authorized and established operating conditions for the Trust Fund. With the Corps' authorization, the MCHF—as the SSTF sponsor—can assume an applicant's Clean Water Act Section 404 stream mitigation responsibilities. Costs associated with participating in the Trust Fund are based on specific permit requirements and market forces (i.e., Means Building Construction Data).

GOAL Provide an accountable stream mitigation option that offers benefits to aquatic resources, regulators, and Section 404 applicants.

OBJECTIVE Implement an in-lieu-fee mitigation alternative that works to ensure stream impacts are given increased attention during the Clean Water Act's Section 404 regulatory process.

FOCUS To address authorized impacts to headwater stream systems (i.e., 1st through 3rd order).

PROGRAM FACTS The Trust Fund has: (1) remained voluntary, never mandatory, (2) not changed the Clean Water Act's permit process, (3) been used to address small acreage impacts, and (4) served to increase the regulated public's knowledge of headwater streams.

TRUST FUND DOLLARS Resources are earmarked for restoration, enhancement, and/or protection of stream systems and associated riparian habitats.

Trust Fund Dollars are handled in accordance with: (1) MOU and (2) grant program guidelines.

- Request through process ensuring only priority stream projects are funded.
- Support grant projects located within MDC management region where stream impacts occurred.
- Utilize project sites that are covered by a 30-year agreement, permanent easement, or purchased by the Foundation.
- Require allocation to a specific project within three years following the calendar year collected.

Annual Reporting The Foundation must provide the Corps with an annual report which states the Trust Fund's: (1) balance, (2) investment instruments, and (3) list of supported stream projects and associated costs. Each report will cover one calendar year cycle (i.e., January through December).

How the Stream Stewardship Trust Fund Works: Jurisdictional Acres

The Stream Stewardship Trust Fund (SSTF), a creative in-lieu-fee mitigation tool, was established late in 1999 resulting from an agreement between the Missouri Conservation Heritage Foundation (MCHF) and the U.S. Army Corps of Engineers (COE), Kansas City and St. Louis Districts. In the past, permit applicants and agency regulators (COE) complying with Section 404 of the Clean Water Act had limited viable alternatives for lessening or mitigating adverse impacts to stream systems. Today, funds collected from adverse impacts authorized to be mitigated through this in-lieu-fee option are earmarked for stream restoration, enhancement, and/or preservation projects – ensuring appropriate compensation.

The purpose of the SSTF is to serve as an innovative stream mitigation tool and focus on stream impacts not currently being addressed in the regulatory process. In addition, the SSTF shall provide a funding source to restore, enhance, and protect Missouri's stream resources consistent with the Foundation's mission to promote awareness and public support of Conservation Department programs and services.

The SSTF Grant Program is administered by the MCHF with MDC providing technical review. Use of SSTF projects is limited to projects that restore, enhance, and/or protect Missouri's stream resources and associated riparian habitats. SSTF resources are used to support projects on non-MDC lands, sponsored by MDC. Similar to other grant programs, SSTF resources are not MDC funds and the use of the funds is limited to specific uses and reporting requirements. Proposed projects are funded by MCHF based on regional stream needs, maximum return on expended monies, level of threat to the stream system, and overall anticipated benefits to stream resources.

The MCHF depends on MDC to provide liaison positions for coordination of Department staff and activities for implementation of the SSTF grant program.

An Individual Example of Participation and Fee Collection Under Jurisdictional Acres Method

When MCHF staff is contacted about a cost estimate, the following information is requested by mail or fax:

1. Verification in writing from either the U.S. Army Corps of Engineers or the Missouri Department of Natural Resources (DNR) that the SSTF has been offered as a mitigation option. MCHF will prepare a cost estimate with no obligation, but cannot accept payment until the requested verification is received.
2. The number of linear feet impacted.
3. The average width of the stream being impacted.
4. The average depth (at the high water mark) of the stream being impacted.
5. The number of feet of buffer required on each side of the impacted stream (typically 50' on each side). A buffer will require plantings of seedlings.

Cost estimates are mailed or faxed to individuals and copies are retained of all estimate inquiries and responses. Individuals who receive an estimate and choose to participate in the program will send the payment directly to MCHF. Upon receipt of payment, staff will prepare an acknowledgment letter to the appropriate COE (or DNR) official stating that mitigation requirements have been met in accordance with the memorandum of understanding. Copies of the acknowledgement letter are provided to the participants.

How the Stream Stewardship Trust Fund Works: Missouri Mitigation Method (Credits)

On March 1, 2007 the U.S. Army Corps of Engineers posted a public notice of pending changes to the mitigation method that would go into place on April 1, 2007. These changes would move the mitigation process away from jurisdictional acres to the assigning of credits based on the impact to the stream resource. In return, mitigation projects completed were also assigned a credit value. So, for every credit MCHF assumed the liability for they are required to mitigate a credit. To meet this obligation, MCHF had to determine their cost per credit to assign a fair value to each mitigation credit. They began reviewing existing projects, assigning a credit value using worksheets provided by the U.S. Army Corps of Engineers. Once credits were assigned the total costs of the projects were divided by the number of credits. These dollar amounts were then averaged and it was determined that the MCHF could mitigate a credit for approximately \$35.00 per credit.

Beginning April 1, 2007 the MCHF began accepting fees under the Missouri Mitigation Method at a cost of \$35.00 per mitigation credit. In 2009 the cost per credit was reevaluated and the Foundation reduced their cost per credit to \$25.00.

In April, 2013, the Missouri Mitigation credit calculation method was updated and revised by the Corps of Engineers, with input from several other federal and state agencies. This revision has been used on mitigation projects since its adoption.

An Individual Example of Participation and Fee Collection Under Missouri Mitigation Method

When MCHF staff is contacted about a cost estimate, the following information is requested by mail or fax:

1. Verification in writing from either the U.S. Army Corps of Engineers or the Missouri Department of Natural Resources (DNR) that the SSTF has been offered as a mitigation option.
2. A copy of the permit issued documenting the number of credits to be mitigated for.

The cost of \$25.00 per credit is provided to the individual along with the total cost based on the permit. This is then mailed or faxed to individuals and copies are retained of all inquiries and responses. Individuals who choose to participate in the program will send the payment directly to MCHF. Upon receipt of payment, staff will prepare an acknowledgment letter to the appropriate COE (or DNR) official stating that mitigation requirements have been met in accordance with the memorandum of understanding. Copies of the acknowledgement letter are provided to the participants.

Under Both Jurisdictional Acres and Credits

After the fee is collected, careful documentation is created which identifies MDC Region/County, jurisdictional impacted acres, and Corps District. Fees are pooled and projects are considered based on priority and timeline allocation considerations.

HOW THE NEW PROGRAM WORKS

A 2000 Memorandum of Understanding between the Foundation and U.S. Army Corps of Engineers authorized and established operating conditions for the Trust Fund, and on June 6, 2013, an Instrument was approved that governed the operation of the Stream Stewardship Trust Fund under the 2008 compensatory mitigation rules.

With the Corps' authorization, the Foundation—as the Trust Fund sponsor—can assume an applicant's Clean Water Act Section 404 stream mitigation responsibilities. Costs associated with participating in the Trust Fund are based on specific permit requirements and market forces.

GOAL

Provide an accountable stream mitigation option that offers benefits to aquatic resources, regulators, and Section 404 applicants.

OBJECTIVES

To provide an alternative to permittee-responsible compensatory mitigation that replaces functions and values lost through permitted impacts; enhance the stream resources of Missouri by addressing ecological needs on a watershed basis, provide additional funding for stream improvement projects in Missouri's watersheds, direct mitigation resources to ecologically impaired watersheds, and assist in implementing the improvement objectives of MDC's stream programs; minimize the temporal loss of stream functions and services by gaining approval of mitigation sites in advance of or concurrent to mitigation needs; provide projects to meet current and expected demand for credits in areas without mitigation banks; achieve ecological success on a watershed basis by improvements that are appropriate to the stream or watershed and by integrating ILF projects with other conservation activities; provide a funding complement to statewide stream management efforts of MDC; utilize scale efficiencies by combining the impacts from individual smaller projects into larger mitigation projects with greater ecological value; procedurally unhook the mitigation of development projects from those with little training and experience in replacing natural values; and promote a complement to stream reach-based mitigation banking that is of larger scope.

FOCUS

To address authorized impacts to streams, especially headwater systems (i.e., 1st through 3rd order), in select EDUs.

PROGRAM FACTS

The Trust Fund has: (1) remained voluntary, never mandatory, (2) not changed the Clean Water Act's permit process, (3) been used to address impacts to small acreages and stream reaches, and (4) served to increase the regulated public's knowledge of headwater streams.

TRUST FUND DOLLARS

Resources are earmarked for restoration, enhancement, and/or protection of stream systems and associated riparian habitats.

Trust Fund Dollars are handled in accordance with: (1) the Instrument, and (2) grant program guidelines:

- Request through process ensuring only priority stream projects are funded.
- Support projects located within the EDUs where stream impacts occurred.
- Utilize project sites that are covered by permanent easements or other long term protection instruments arranged by the Foundation.
- Require allocation to a specific project within three years following the calendar year collected.

Annual Reporting

The Foundation must provide the Corps with an annual report which states the Trust Fund's: (1) balance, (2) investment instruments, (3) list of supported stream projects and associated costs; and 4) a summary of released credit balances in each approved EDU. Each report will cover one calendar year cycle (i.e., January through December).

How the New Stream Stewardship Trust Fund Works: Credits

The MCHF established itself as a qualified in-lieu-fee mitigation sponsor for COE authorizations in Missouri in 2000, and upon formal approval of the final instrument by the COE on June 6, 2013, the SSTF was reestablished under the new rules.

The proposed geographic service area for the SSTF is defined as the Ecological Drainage Unit (EDU), and MCHF provides compensatory mitigation in eleven EDUs (Apple/Joachim, Blackwater/Lamine, Cuivre/Salt, Grand /Chariton, Nishnabotna/Platte, Black/Current, Meramec, Moreau/Loutre, Osage, Upper St. Francis/Castor and White basins). Additional EDUs may be added in the future as proposed amendments to the instrument for COE and IRT approval. MCHF provides compensatory mitigation for permitted impacts within the same geographic service area in which impacts occur unless the district engineer, in consultation with the IRT, has agreed to an exemption.

Through the SSTF, MCHF has agreed to take on the mitigation responsibilities of approved development projects and replace those with approved on-the-ground mitigation projects. The

COE's Missouri Stream Mitigation Method (MSMM) is used to determine the number of stream credits used for impacts and for projects. Developers complete the MSMM and, upon COE approval, communicate a project description and number of credits to the MCHF for a written estimate. The MSMM is also used to determine the number of credits involved in an on-the-ground restoration, enhancement or preservation project. Stream impact credits are offset with stream project credits; the Stream Stewardship Trust Fund handles only stream impact credits and is not involved in mitigating small wetland impacts.

For each proposed mitigation project, MCHF submits a project application/mitigation plan to the appropriate COE district and the IRT describing the project, its location and other project-specific information. Each mitigation project is reviewed and approved by the MCHF, MDC, the IRT and the COE. MCHF manages the project for consistency with the approved project criteria following IRT review and COE approval. MCHF and MDC work together on the implementation, performance, and long term management of compensatory mitigation projects.

MCHF covers its own mitigation needs under the new program by selling advance and released credits as specified in the Instrument. As milestones in each project's schedule are reached (i.e., restoration, creation, enhancement, and/or preservation is implemented and interim and final performance measures are met), credits released from new projects begin to accrue in each EDU. MCHF strives to allocate money to complete land acquisition and initial physical and biological improvements on an approved mitigation project site by the third full growing season after a debit occurs in that service area. Credits for projects installed under this Instrument normally are not released until MCHF has obtained IRT approval of the mitigation plan for a site, has achieved the applicable milestones in the credit release schedule as specified in the project mitigation plan, and the credit releases have been approved by the District Engineer.

When mitigation projects have been installed, they are monitored for project success and attainment of performance standards, and any normal and long-term maintenance needs are completed. Any non-attainment issues beyond the scope of routine maintenance are addressed through remedial action plans in conjunction with the COE and the IRT.

